

# The Cleobury Clarion

## SERVING CLEOBURY COUNTRY

OCTOBER 2022

### A CHRISTIAN OFFER

Liz Smith writes:

Three years ago, the community was amazingly generous with its support to help us to put new heating into the church and since then we have had a warm space that we can use sensibly all the year round. Our heating is run on oil, the price of which is going up hugely in line with everything else, but as a church we are determined to keep the heating running this winter somehow so that we can provide a warm space in the centre of town for our community to use as and when they need it during the day. You helped us and now we want to help you – we are all part of the same great community. We hope that people will come and sit in the church, on their own or with their families, for periods during the day if they cannot afford to keep their homes warm. On a Thursday morning there is free tea, coffee and biscuits available from 10.00 to 11.30am for anyone who drops in and we are also

going to provide something for a light lunch on that day between 12noon and 1.00 pm.

Please do come and stay warm in your church in your town. You will not get hot – it is a large building – but you will not be cold and it will not cost you anything. The church is open from 10 am until 4 pm every day.

### A BIG BIRTHDAY



*Maggie James (left) and Pam Edwards proudly presented the W.I. 100th birthday banner.*

September 16th was a notable day for one of the town's leading bodies, with Cleobury Mortimer Women's Institute celebrating its 100th birthday. The W.I. was

originally formed in 1915 to encourage women to produce food. It has grown to be the largest voluntary women's organisation in the UK, with over 200,000 members and approximately 6,300 WIs. It is quite simply a great force for good and we should be proud to have such an active branch here in our town.

### THE BORDERS

#### CLASSIC BIKE SHOW

A lot of people have expressed disappointment at what they thought was the cancellation of the Borders Show. Not so. In fact it was postponed at the school's request following the sad death of Queen Elizabeth II.

The Parent Teacher Association had a quick consultation with the bike element and it was agreed that the show would move to a new date for this year only - October 9th.

Most of the entries have said they'll be with us and a special attraction will be the recently launched BSA Gold Star with an original by its side.



*Glenys Turpin Reflexology*



Reflexology is a non-invasive form of complementary medicine. It involves a method of treatment in which pressure is applied to the feet or hands to treat a wide range of ailments and is effective in promoting deep relaxation and well-being.

Reflexology does not claim to cure, diagnose or prescribe. It may be used alongside orthodox medicine and may be helpful with stress related symptoms and other conditions.

For more help and information contact Glenys...

5 New Road, Cleobury Mortimer. [gkenturp@hotmail.co.uk](mailto:gkenturp@hotmail.co.uk) 07763 332759

Diploma of The Bayly School of Reflexology, Member of The British Reflexology Association

### MOBILE FOOT HEALTH CARE

Providing a thorough nail and foot care treatment in the comfort of your own home.

Registered and insured practitioner.

**STACEY WILLIAMS FHP Dip RFHP**

**07794 022 618**



# Victoria Allen Funeral Services

An Independent Family Business offering a  
Personal and Professional Service

Over 25 years' Experience

Competitively Priced

Private Chapel of Rest

Golden Charter Pre-Paid Funeral Plans

Covering All Areas

Home Visits Available

## 01584 879035

24 Hour Service

8 Charlton Rise, Ludlow, Shropshire, SY8 1ND  
[www.vallenfuneralsludlow.co.uk](http://www.vallenfuneralsludlow.co.uk)  
Email: [vafs@btinternet.com](mailto:vafs@btinternet.com)



**The Cleobury Clarion, October 2022**  
**Volume Eighteen - Edition Seven**



*Bark peeling is “part of a virtuous circle of sustainable production. As Linda Iles explains in her Wyre Forest column on Page 23*



*Clarion Motoring in an affordable style. Scotland in a £400 car!? It can be done. See Page 29*



*Paul Sterrell-Cooke is the driving force behind Cleobury's new Framing Studio. See Page 51*

**And On Other Pages....**

- 5 - Horticultural Society
- 7 - Stottesdon Apple Day
- 9 - Cleobury W.I.
- 11 - Cleobury Country Centre
- 13 - Stottesdon Church Progress
- 15 - Let's Support a Brave Man
- 19 - A Determined Campaigner
- 21 - Stepping Out! Walking News
- 25 - Philip Dunne MP
- 27 - Nightingale Nursing Fund
- 31 - All Change at Cleobury RFC
- 32/33 - Doddington Lodge
- 37 - News from the Town Library
- 39 - Cleobury Mortimer Benefice
- 41 - Simon Morton on Gardening
- 43 - The Borders Classic Bike Show
- 45 - Mrs Grumpy
- 47 - The Social Calendar
- 53 - The Cleobury Community Hub
- 57 - Let's Beat the Scammers
- 59 - Bowling Club's Big Success.
- 61 - The Town Council Report
- 63 - Local Information



**cleobury  
wash house**

**DRY CLEANING & LAUNDRY SERVICE**  
**20 HIGH STREET, CLEOBURY MORTIMER**  
**01299 270571**  
**HOUSEHOLD & COMMERCIAL WORK WELCOME**  
**FULLY ATTENDED, OPEN 7 DAYS**

Self Service ~ Full Service Wash/ Dry/ Fold/ Ironing ~ Large Machine for Big Items  
Service Washing for Duvets/ Blankets/ Sleeping Bags ~ Team Sports Kit Laundry Service  
Equestrian Rug Cleaning ~ Laundry Service for Pet Items  
Professional Shirt Service ~ Nikwax Wash & Proof for Outdoor Clothing

*.... the place to air your dirty laundry!*



# RED HARE

45 HIGH STREET  
CLEOBURY MORTIMER  
WWW.REDHARESALON.CO.UK

01299 270702

YOUR  
HAIR  
IS  
OUR  
BEST  
ADVERT

PPD FREE - PARABEN FREE - SULPHATE FREE - CRUELTY FREE

“Red Hare now offers a private hairdressing room. Perfect for those wanting more privacy, peace and quiet“



## CLEOBURY CHIROPRACTIC

31 High St. Cleobury Mortimer DY14 8DQ

**JS** James  
Smith  
OSTEOPATHS

We offer both **CHIROPRACTIC** and **OSTEOPATHY**,  
using gentle methods suitable for all ages.  
Appointments available outside of normal working hours.  
Both practitioners are fully registered, insured & regulated.

**Sue Brown**  
MA MSc DC MMCA  
CHIROPRACTOR

- \* BACK PAIN \* SCIATICA \* POSTURAL PROBLEMS
- \* JOINT PAIN \* HEADACHES (arising from the neck)
- \* Some SPORTS INJURIES

**PLUS** \* **COMPUTER (DSE) WORKSTATION ASSESSMENTS**  
\* **BACK CLASS** – Weekly exercise class for those with back/neck pain.

**Hands for Heroes**  
Free Chiropractic Care for War Veterans



**iO**  
THE INSTITUTE  
of OSTEOPATHY



01299 519351 / 07932 000028 / 07506 287191

[www.notjustaboutbackpain.com](http://www.notjustaboutbackpain.com)

[www.jsosteopaths.co.uk](http://www.jsosteopaths.co.uk)

**GCC registered**  
General Chiropractic Council  
[www.gcc-uk.org](http://www.gcc-uk.org)

 **General Osteopathic Council**  
**I'M REGISTERED**  
Registration no. 9254  
[www.osteopathy.org.uk](http://www.osteopathy.org.uk)



## **POLICE NEWS**

On 2<sup>nd</sup> September, the Cleobury Mortimer and Highley Safer Neighbourhood Team executed two drug warrants in Cleobury Mortimer. The day of action resulted in a number of arrests. The investigation into suspected offences is ongoing. The warrants were executed with the support of Force Operations, Patrol, the Special Constabulary and the Forensic Team and could only be made possible with support from the public. If anyone has any information following on from this please contact us using 101, the West Mercia Police website or by writing in.

Also this month some residents will be receiving letters with a self-addressed envelope. I do appreciate that some people do not use the Internet or want to contact us by phone. The letters have been distributed to try and reach those who would rather contact us in a more traditional way.

*Sergeant Kate Øen*

## **CLOWS TOP GARDENING CLUB**

October's speaker is Wade Muggleton, a fan of

Permaculture, his garden in Stottesdon opens under the National Gardens scheme every year. He has developed an orchard with 130 varieties of fruit trees. His subject on the 26th will be "Apples of the West Midlands." We are in good company; he has previously featured on Gardener's World. Wade is also an author; he has written "The Orchard Book"

So, if you would like to have fruit trees (plant bare rooted November - March) or would like to know anything about your existing trees, come along at 7.45pm for the talk at 8.00., you will not be disappointed.

Don't forget the flower of the month competition, or your magazines to swap. As usual tea, coffee, biscuits and chat to other gardeners is also available. See you on the 26th of October at Clows Top Victory Hall.

*Judith Lawson*

## **THE HORTICULTURAL SOCIETY**

We started our Autumn season with a presentation by Kate Hurst, Principal of Camomile & Cornflowers in Shelsley Beauchamp. She cultivates British flowers for cutting,

together with a range of trees and shrubs to provide design structure foliage. Her design style is loose and informal and the ethos is growing and using sustainable/reusable materials, by eco-friendly methods. For displays she uses chicken wire, moss and twine as alternatives to foam bases. Kate is an advocate of "Sustainable Church Flowers, promoting more eco-friendly displays in churches." She demonstrated an elaborate display for a pedestal, and a hand-held posy, raffled for contribution to the annual cost of pleaching the historic lime trees in our High Street.

To close, Kate gave us advice on preparing and keeping our own flower displays: always cut in the cool of the day and store in a cool spot; take off as many leaves from the stems as possible; use clean water and change daily; **8th7.30add** a little sugar to the water.

On 10th October we have a demonstration by local plantswoman Marion Wilson at St Marys Community Centre, St Marys Place. Visitors always welcome.

*Linda Ashman,  
Secretary, CMHS*



**The Oak Boy**  
TRADITIONAL OAK FRAMING  
SINCE 2011  
**07398 233443**

**John Caswell**  
[Johnjocaswell@yahoo.com](mailto:Johnjocaswell@yahoo.com)

SERVICES AVAILABLE

<ul style="list-style-type: none"><li>➤ Flooring</li><li>➤ Manufacturing &amp; fitting doors &amp; windows</li><li>➤ Kitchens</li> <li>➤ Cladding</li><li>➤ Studwork</li><li>➤ Bespoke Oak Framing</li></ul>	<ul style="list-style-type: none"><li>➤ Landscaping</li><li>➤ Patios</li><li>➤ Brick &amp; Stone work</li> <li>➤ Roofing, Tiling, Guttering</li><li>➤ General Building</li><li>➤ Property Maintenance</li></ul>
--	---

Call now for a Free Quotation!



**CM BESPOKE CARE**

**Q** Care Quality  
Commission  
Registered

**S P I C**  
Shropshire Partners In Care

Personal, Nursing and Domestic care.  
Tailored to your needs.

**Call for a free consultation**

**Tel: 01746 718816**  
**Mobile: 07943834132**

www.cmbcare.co.uk  
www.facebook.com/cmbcare  
email: cmbbespokecare@btconnect.com



**07971 361901 or 01299 832484**

**Complete Bathroom Installations**  
**Bathroom Refurbishment or Repairs**  
**Wet Rooms**  
**Professional Wall and Floor Tiling**



For a quality and guaranteed service, call Stuart for a free quote  
*Highly Recommended / References available - see my reviews on [www.freeindex.co.uk](http://www.freeindex.co.uk)*

**FOR THE BATHROOM YOU DESERVE!**

**Flowers By Fiona** *est 1991*

**Fresh Flowers made to order**  
**Special Occasions**  
**Weddings, Anniversaries, Birthdays**  
**Sympathy Tributes**

**19a High Street,**  
**Cleobury Mortimer**

**Tel: 01299 272 995**



**Phoenix Environmental Ltd.**  
**Contaminated Land Consulting and Contracting**

Bringing 17 years of experience to bear, we provide straightforward advice help guide you through planning, or deal with your contaminated land, geotechnical and geo-environmental issues.

Phoenix Environmental offer both site and office-based services including:

- Regulatory Liaison and Planning Approval
- Phase 1 Desk Studies (Geology, Hydrogeology, Hydrology, History)
- Intrusive Investigation (Phase 2) Design and Application
- Trial Pitting, Cable Percussive Boreholes, Dynamic (Window) Sampling
- Flood Risk Advice
- Geotechnical Investigation/Advice, Foundation Advice
- Risk Assessment (GQRA/DQRA)
- Remediation Strategies/ Verification Reporting
- Environmental Audits/Site Audits
- Site Based engineering and supervision
- Drone Surveys/Media Production



We'll be there to guide you through every stage.  
[www.phoenixenviro.co.uk](http://www.phoenixenviro.co.uk)

Contact us: email. [enquiries@phoenixenviro.co.uk](mailto:enquiries@phoenixenviro.co.uk) Tel. 07800 646691

## **SAINT JOHN'S DODDINGTON**

Following the sad death of HM Queen Elizabeth II we gave people the opportunity to visit St John's and add a prayer to our prayer tree, with a book of condolence being open at St Mary's. We postponed our Ride & Stride sponsored event and will give an update next month. We also hope that our two newly refurbished windows will be back in place by the time you read this – keep a look out and do feel welcome to take a closer look. Our October Event is Soup Lunch on Saturday the 22<sup>nd</sup> at 12 noon in the Village Hall - we hope you can join us. Aware of the difficulties some might be having, we're not making a fixed charge for this; just pay if and what you can. Sometime in the autumn/winter months we will be having work done on the two Irish Yew trees by the church steps. These have outgrown their normal appearance, and need to be brought back to the traditional formal shape and be made safer, also allowing the church to be seen from the road. This will be done in two

stages, starting with reducing the height this year. Care will be taken with memorial stones in the graveyard while the work is done. For up to date news follow us on Facebook: @StJohnsDoddington, or check our website: [www.achurchnearyou.com/church/10505/](http://www.achurchnearyou.com/church/10505/) Email: [stjohnsdoddington@gmail.com](mailto:stjohnsdoddington@gmail.com) Celia Gibb 01584 318036

## **CLOWS TOP VICTORY HALL**

After a successful Summer Fete in August and a Barn Dance in September the Clows Top Victory Hall Committee have been working hard to make sure everything is ready for a Murder Mystery evening on October 8th, which will include Dinner. Tickets are £20 and booking details are shown below.

The Hall will be the venue for a Jumble Sale on October 22nd starting at 1.30pm.

On November 26th there will be a Christmas Fair from 1.00 'til 4.00. Stalls can be booked at £10 each by making contact using the details supplied below.

Telephone 07738 014884; e m a i l [admin@clowstopvictoryhall.c](mailto:admin@clowstopvictoryhall.c)

[o.uk](http://o.uk) or visit the Clows Top Victory Hall Facebook Page.

*Nigel Caldicott*

## **JOHN DRAPER**

The family of John Draper of 11 Childe Road, would like to thank everyone for their kind words and cards following John's recent death at The Alexandra Hospital in Redditch.

John's funeral will take place at Wyre Forest Crematorium at 11.30am on Thursday 6th October (family flowers only) and afterwards at The Market Hall in Cleobury Mortimer. Any donations received will be split between the British Heart Foundation and Epilepsy Society.

## **STOTTESDON**

### **APPLE DAY**

This is always a good event, based at The Fighting Cocks from midday until 3.00 on Saturday October 8th. Loads of apple and cider attractions, including the chance to use the community's cider press to produce apple or pear juice from your fruit - bring clean bottles! A £5 donation to keep the press in good order is all it will cost. Admission to the event is free.

# **TDC CARPENTRY SERVICES**

Fully insured qualified professional  
Excellent workmanship and quality customer care  
From hanging doors, fitting kitchens to bespoke projects

## **Tim Clare - 07890 519980**

**Professional. Affordable. Local.**



### Electrical Installations

No matter the size, we can gladly undertake all Domestic, Commercial and Industrial installations you require.

A family run business, with over 25 years industry experience.

From period properties to agricultural solutions, we provide a professional service every time. We also do call outs and emergency work.

### Renewable Energy

Protect yourself from rising energy bills by considering renewable energy.

Solar PV is the most accessible way you can save energy by producing electricity from the sun. Earn a tax free income from the electricity your system produces.

Speak to us about how renewable energy can benefit you or your business.

**Whatever your query, give us a call.**

**T: 07971 096267 / 08450 564173**

**W: [www.awe-services.co.uk](http://www.awe-services.co.uk)**

**Two Staks, Eagle Lane, Cleobury Mortimer, Worcs. DY14 8RA**





## **CLEOBURY W.I.**

Several members enjoyed the performance of Mikron Theatre's amusing play about the National Centenary of WI held in Stourport on 2<sup>nd</sup> September. It was an amusing farce, which brought back memories for some longstanding members.

Gabby Franklin treated us to an evening of jam and chutney making. An informal session demonstrating how to do this using the microwave. We were invited to taste a variety and all enjoyed the evening.

Highlight of the month was our Afternoon Tea, the main event in our Centenary year. Special guests included Presidents of neighbouring branches of WI, previous Presidents of Cleobury WI, Ashley Buck and Charles James from Frank P Matthews, who had donated the commemorative tree. We gathered outside church for the opening of the Centenary Garden. Ashley blessed the garden, and a minute of silence was held in memory of Queen Elizabeth II, who was a WI member for many years. Judy invited Glenys Wheeler, chair of Shropshire Federation of WI to

cut a ribbon to formally open the garden.

In the Market Hall, we raised a glass of Prosecco to toast WI, sang Jerusalem and God Save the King, accompanied by local harpist, who also kindly provided background music throughout the afternoon. Our commemorative tablecloth was on display for the first time and admired by many. Val had made and decorated the celebration fruit cake, which was cut by Bridget Thurgood, our advisor and County WI Treasurer, and 'Happy Birthday' was sung. Commemorative tea towels were on sale and are available from Wendy Powell at £6.50 each.

The whole afternoon was declared a success, a combined effort by members who had worked hard making sandwiches, providing a selection of tasty savoury food and baking delicious cakes. This is what we in WI do best!

*Val Sniadowski*

## **FROM THE BANDROOM**

After enjoyable engagements at both Far Forest Show and Shrewsbury Quarry in August, our final bandstand of the summer should have been at

Malvern on 11<sup>th</sup> September, however this was cancelled in respect of the Queen's passing; we hope to play there again in 2023.

Some members of the band attended the British Open competition at Symphony Hall on 10<sup>th</sup> September, featuring the best bands in the country. As the Queen was Patron of the Brass Band Federation, it was a difficult decision for the organisers, whether to cancel or go ahead with the competition. They decided to go ahead, partly on grounds that the music, which was specifically composed for this competition, was based on the Hymn tune 'Now thank we all our God' and it seemed very apt and at times moving, to have echoes of this tune, with a photograph of Her Majesty also on stage.

October is a quiet time for the band, we will put the summer music into our library and get out some exciting new repertoire, because before we know it, we will be getting out the Christmas music!

*Katie Griffiths*

## **SILLY BIT**

**I must be getting old - my wild oats have turned into prunes and All-Bran.**



**The Well Being**

**Holistic Therapies**

Cleobury Mortimer DY14 8AS

[www.thewellbeing.co.uk](http://www.thewellbeing.co.uk)

April Boardman

Reiki Master ITEC MFHT Dip Hyp

**Do you have aches & pains, ongoing health issues or just need to relax? Help is at hand!**

**Deep Tissue & Remedial Massage  
Reiki & Crystal Healing**

**Hot Stone Massage-Aromatherapy- Reflexology**

**Pregnancy Massage & Hypnotherapy**

**20% off your 1st treatment!**

**Tel 01299 513148 or 07881494036 or Book Online!**



Care At Home

TLC Care at Home are a well-established family run, Home Care Provider who have built up an excellent reputation within our local communities

We have recently been rated as **OUTSTANDING** by CQC and this puts TLC Care at Home in the top 3% of providers in England



### Professional care and support in your own home

Our dedicated Care Team are here to help support you with 24/7 care provision should it be required. At TLC Care At Home, we are dedicated to supporting people with wide range of needs, including Dementia, Acquired Brain Injury, Physical Disabilities, Learning Disabilities, Sensory Impairments and supporting our aging population.

Depending on your individual needs, we can offer varying degrees of support from young adults to very mature people. TLC Care at Home are here to help anyone who requires care and support to enable them to remain living at home for as long as it is safe to do so.

### Comprehensive range of care services

- Domiciliary Care
- Palliative care
- Personal care
- 24 hour care
- Companionship
- Dementia Care
- Overnight Care
- Elderly Care
- Care for young adults
- Supporting younger people
- Domestic services: cleaning, cooking, washing and shopping
- Collections of pensions or prescriptions
- Trips out and about

Please contact us now for more information 01299 272 897

Email: [wecare@tlc-careathome.co.uk](mailto:wecare@tlc-careathome.co.uk)

Website: [www.tlccareathome.com](http://www.tlccareathome.com)



## Professional Family Estate Planners

- Wills
- Lasting Powers of Attorney
- Free Will reviews
- Probate support
- Care home fee avoidance
- Free funeral plan with every Will
- Family Protection Trusts



**“A lifetime’s attention to complex legal issues as a retired Detective Superintendent and now a Private Client Lawyer means you can definitely trust Mark and his daughter Lauren to write your Will”**

**T:** 01299 251442

**E:** [info@ambalegalservices.co.uk](mailto:info@ambalegalservices.co.uk)

**W:** [ambalegalservices.co.uk](http://ambalegalservices.co.uk)

- Appointments by telephone, video link or in the comfort of your own home
- Over 45 years’ experience in law
- Friendly and professional support for you and your family
- Call us up for a chat to see how we can help!



## **FAR FOREST AND ROCK ROYAL BRITISH LEGION**

News of Her Majesty Queen Elizabeth's passing was greeted with sadness by the members of the branch at their Annual General Meeting.

During the meeting the Branch Standard Bearer, May Carter, was able to announce that she had received a formal invitation from the Royal British Legion for her to carry the Branch Standard whilst joining other Legion Standards involved in lining the route during the Funeral Procession in London. May said "I have attended the Festival of Remembrance at the Royal Albert Hall twice which were really special occasions but this invitation is a great honour and privilege for the Branch and for me personally."

The branch will be assisting with Poppy Appeal collections in a number of other areas this year and will also be manning stands at the Strensham Motorway Service area on the M5. Anyone wishing to volunteer to assist with this very important annual appeal is asked to make contact with the branch (details below).

On Saturday 8<sup>th</sup> October the Branch has organised a Northern Soul Event at the Civic Centre in Stourport when

a number of Northern Soul DJs will be providing an afternoon and evening of great entertainment, proceeds of which will go to the Poppy Appeal. Tickets are available at the The Civic website at £8 in advance or £10 at the door on October 8th.

On September 18th a special ceremony took place at the War Memorial in Far Forest when a wreath was laid in Memory of HM The Queen who was Patron of the Royal British Legion. The Union Standard was carried by Chair Martyn Carter, in the absence of the Branch Standard which was in London preparing for the royal funeral on the 19th.

The Branch meets at the Rock Cross Inn at 7pm on the second Monday of each month. Make email contact: [chairman@farforestandrocklegion.org.uk](mailto:chairman@farforestandrocklegion.org.uk). The Branch also has its own Facebook Page; visit Far Forest and Rock Legion Branch.

## **CLEOBURY COUNTRY CENTRE**

We are very excited to bring to you the below in person training courses this autumn in collaboration with Marketing by Zebra.

**Tuesday 18<sup>th</sup> October, 10am – 4pm – Building a brand for your business**

Branding is so much more than just a logo; Establish your

identity as a company; understand your business personality, values, tone of voice and ethos; identify what makes you unique; visuals of branding

Lunch not included – you can bring your own, or there are cafes nearby. £75+VAT.

**Tuesday 25<sup>th</sup> October, 10am – 12pm – Creating an email newsletter with Mailchimp**

Why is email marketing important? Ways to build your mail list; the basics of Mailchimp and the opportunities it has on there; create and send a newsletter

For this session you must bring a laptop with WiFi connection. £35+VAT.

**Sessions will all be held at Cleobury Country Centre, Love Lane, DY14 8PE. There is parking available on site.**

Please respond to this email with which sessions you would like to book: [business@cleoburycountry.com](mailto:business@cleoburycountry.com)

## **EARLY CHRISTMAS NOTICE**

Severn Hospice Crafters and the Stottesdon and Support Group will be holding a free to enter Christmas Fair at Broome Park Farm, Catherton Road, CM, on November 19<sup>th</sup> November from 11am - 'til 2.00 All proceeds for Severn Hospice.

*Charlton Interiors*

UPHOLSTERY & INTERIORS

Rosemary Jones

Mob: 07837 609229

Phone: 01584 861823

Email: [info@charltoninteriors.com](mailto:info@charltoninteriors.com)

[www.charltoninteriors.com](http://www.charltoninteriors.com)

ॐ **BESPOKE YOGA TUITION** ॐ

Relax Breathe Stretch Tone

One to one Yoga lessons

BWY trained teacher with over 15 years experience

Can travel to your home

Angela Kazimierczuk

**07870 506655**



# CLEOBURY MORTIMER PARISH HALL

The largest hall in the area

We are open again so would you like to celebrate an event, party, wedding, or just a get together?

We are able to cater for small or large parties, sit down dinner parties for up to 100 people with or without a bar.

Come and have a look at what we can offer.

To book, call Janet on 01299 271070

## 'FLICKS IN THE STICKS'

7.30 Saturday October 15th

"Elvis"

*Baz Luhrmann's latest film of the life and music of Elvis Presley*

Licensed Bar. Admission £5.00

## LUNCH WITH THE FRIENDSHIP CLUB

Join us for a freshly cooked two course lunch,

every 2nd and fourth Tuesday from 12.30 to 2pm - only £3.00

First lunch 11th October - book by the Sunday before 01299 271713

Do you know a 2, 3 or 4 year old who would like to join our fantastic nursery?



**Stottesdon Gateway NURSERY**  
We really care and make learning fun

**We can offer:**

- A safe and nurturing learning environment with dedicated and caring staff.
- High quality provision with strong links to Reception.
- An amazing outdoor area and use of the school facilities and space.

- Nursery places for 2, 3, 4 year olds, available from September 2021
- From 15 - 30 funded hours available.
- BEFORE & AFTER SCHOOL & HOLIDAY PROVISION for children aged 2 - 11 years old.

Ofsted Outstanding Provider

TO BOOK A TOUR :

Stottesdon C of E Primary School

Stottesdon

Shropshire

DY14 8UE

**TEL: 01746 718617**

Nursery and Wrap-around sessions (term-time)		Fees
Early Start	7:30am - 8:00am	£4.00
Breakfast Club	8:00am - 8:45/9:00am	£4.00
Morning Session	9:00am - 11:30am	£10.00
Lunch club	11:30am - 12:30pm	£4.00
Afternoon Session	12:30am - 3:00pm	£10.00
After School Club	3:00pm - 5:30pm	£10.00



## KINLET QUIZ NIGHT

There's a Charity Quiz Night at Kinlet Village Hall on Friday the 28th of this month, starting at 7.30. All in aid of the Severn Hospice Support Group.

Teams of four, at a cost of £8.00 per person that includes fish and chips or sausage and chips. If you don't want to eat, the cost is only £4.00. Bargain! There will be a licensed bar, too. Booking is essential and you can do that through Keith Walton on 01299 409333 or email [k666wal@ymail.com](mailto:k666wal@ymail.com)

## STOTTESDON

### CHURCH PROGRESS

We can report that St Mary's actually does have "bats in the belfry" and in the porch and in the chancel roof.

As there is no 'maternity colony' and our bats are a common species, the planned roof repairs are permitted under licence from Natural England, the provision of three new bat boxes for five years. The design for the roof works will have to be modified slightly to incorporate bat-friendly gaps in ridge tiles and the external stone walls.

Contractor Mike Gammon has had a team stripping-out the wooden floors and kitchen

units at the west end - in the Baptistry and Coffee area.

We knew about dry rot here but the invasive fungus turns out to be more extensive than earlier surveys suggested. So the area is 'out of bounds' to avoid spreading the spores - and for safety reasons we are limiting access to the building until the fungus is removed and the area treated. Anyone with essential church business can, of course, call us 01746 718007 to discuss their specific access needs.

'Behind the scenes preparation' is almost complete for the main roofing and stonework repair contract to begin. The installation of the north side external scaffolding will be complete by the time you read this, and work to remove sections of the old roof is likely to have started just after the August Bank Holiday - with working hours between 08.30-16.00.

*Chris Tibbits*

## ADVENT SOUP LUNCHES

Neen Savage WI will be running Advent Soup Lunches upstairs at Cleobury Mortimer Market Hall on every Thursday in December - 1st, 8th, 15th and 22nd from 12.30 - 1.30pm. For

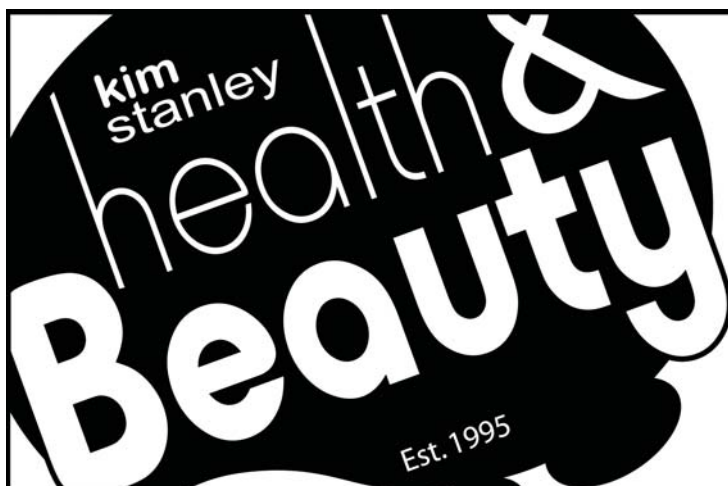
just £5 you will get a choice from 3 homemade soups followed by a seasonal pudding - a different one each week! All proceeds will be donated to the Nightingale Nursing Fund. The Stottesdon and Cleobury Severn Hospice Support Group will also be running a raffle in aid of the Severn Hospice at the lunches.

*Catherine Evans.*

## THE READING GROUP

We met on September 19th and observed a minute's silence in memory of Queen Elizabeth II. Our reviews of 'The Mercy Seat' rather reflected the sombre mood of the day with its story of an 18 year old black man awaiting execution for rape and the events and mixed feelings within his community. 1940s Southern States America was not a merciful place and this feeling was actually caught and displayed.

Our October read is 'Midnight in the Garden of Good and Evil', an intriguing title with little prospect of fine horticulture to be revealed. Much more drama than dahlias, as we will discover when we meet on Monday the 17th in the library.



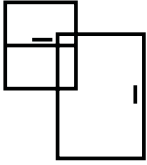
**Kim Stanley**  
30, High Street  
Cleobury Mortimer  
Shropshire  
DY14 8DQ



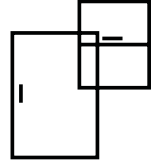
**Tel. 01299 271800**

[www.kimstanley.co.uk](http://www.kimstanley.co.uk)





# Ashley Bannister Windows & Doors



- UPVC Windows & Doors
- Composite Doors
- Porches & Conservatories
- Glass Unit Replacement
- Fascia, Soffit & Guttering
- Handles & Letterboxes
- Hinges & Window Restrictors



**No Job Too Big or Small**  
Certass Approved Installer  
*Local Tradesman Based in Highley*

ashban94@hotmail.com  
Ash: 07817 785245



## Twit - Twoo Falconry

- **Static and flying displays with owls & falcons**
- **Fetes and fayres**
- **3 hour bird experiences based in clows top**
- **Garden parties and birthdays**
- **1-2 hour talks for indoor hall and outdoor visits**



**For quotes and bookings ring Steve Woodison 07738014884 or  
Email [scw1960@hotmail.co.uk](mailto:scw1960@hotmail.co.uk)**

## MIKE AND SHELLEY ROBERTS

**Haulage Contractors**

**Supplier of Aggregate and Asphalt products**

12 Lacon Close, Cleobury Mortimer DY14 8EF

**07860 669350**

**07966 045012**

## LET'S SUPPORT A BRAVE MAN

In 2015 I was admitted to Royal United Hospital Shrewsbury with massive internal bleeding for the second time. I had previously been treated for a duodenal ulcer. This time, after an emergency operation to stop the blood loss, I was told that I had a Gastro Intestinal Stomal Tumour. It was a huge shock to all my family. The consultants, doctors, nurses and staff in the NHS were all brilliant as I underwent an operation called the Whipple Procedure. This was quite frightening with a 10% death on the table rate! The operation was a success and during my recovery I was introduced to the Lingen Davies Cancer Centre at Shrewsbury Royal United Hospital. The staff there are fantastic and after I recovered I thought how best to give something back so I joined Lingen Davis cancer fund as a trustee and I've been fundraising for the Lingen Davis cancer fund ever since.

I would really appreciate your support.

You can donate to their JustGiving page by clicking here: [https://](https://www.justgiving.com/fundraising/andrew-killey?utm_source=Sharethis&utm_medium=fundraising&utm_content=andrew-killey&utm_campaign=pfp-email&utm_term=728fd3b0298b451685694c949c0b672f)

[www.justgiving.com/fundraising/andrew-killey?utm\\_source=Sharethis&utm\\_medium=fundraising&utm\\_content=andrew-killey&utm\\_campaign=pfp-email&utm\\_term=728fd3b0298b451685694c949c0b672f](https://www.justgiving.com/fundraising/andrew-killey?utm_source=Sharethis&utm_medium=fundraising&utm_content=andrew-killey&utm_campaign=pfp-email&utm_term=728fd3b0298b451685694c949c0b672f)

Donating through JustGiving is simple, fast and totally secure. Once you donate, they'll send your money directly to Lingen Davies Cancer Fund, so it's the most efficient way to give - saving time and cutting costs for the charity.

*Andrew Kille*

## FRIENDS OF SAINT MARY'S QUIZ NIGHT

The Friends are holding a Quiz and Fish and Chip Supper at the Sports and Social Club, Love Lane, on Friday October 21st

The club will open at 7:00pm and it's heads down for the quiz at 7:30pm.

Teams of four, inclusive of a fish and chip supper, priced at £14.00 per person. Tickets available from Diane Waddington on 01299 272820 or Steve Todd on 01299 271639

## THE CHURCH BELLS WILL BE SILENT

Part of the restoration work on the church tower includes the painting of the supporting framework for the bells. That will be happening this month and as a result the bells will be silent, but back in very audible action by October 30th. Sunday mornings won't be the same without that rich sound ringing out across the town.

## HOLLYWOOD SHEDS

It seems that Wayne Topham of Hollywood Sheds objected to a mention of his need to change premises in the September Clarion before he had time to notify his customers. The fact was part of a report on the Manor House and given in good faith with no intention of offending.

If Wayne would like to contact the editor and give details of his new location, we would be happy to let our readers know where he can now be found.

## SILLY BIT

Police hunting the 'Knitting Needle Nutter' who has stabbed six people in the rear in the last 48 hours believe the attacker may be working to a pattern.

## Are you thinking about Equity Release?

- **Free** Advice
- **No negative equity guarantee**
  - **Pay off** existing debts
- **Help** your family when they need it most
  - **Boost** your retirement fund
  - **Stay** in the home you love
- Access to highly competitive **life insurance** policies
- Qualified **Will Writer** so call me to have your Will written

**Call me now to find out more**

Equity release will reduce the value of your estate and may effect your entitlement to means-tested benefits.

07966366505 | [Stephanie@midasfp.com](mailto:Stephanie@midasfp.com) | [www.midasfp.co.uk](http://www.midasfp.co.uk)

Midas Financial Planning Services Ltd is authorised and Regulated by the Financial Conduct Authority



**I'm Stephanie**

**07966  
366505**





## Find Your Smile at Cleobury Dental Practice

Whether you're looking for dental implants to replace missing teeth, invisible braces for a straighter smile, boosting your confidence with teeth whitening or a dedicated dentist for your regular care, you can find it all here in the heart of historic Cleobury Mortimer.

- Modern, state of the art facilities and the latest dental technology
- Free car parking adjacent to the practice and step-free access to our dentists' surgeries
- Enjoy private dental care from just 47p per day with our membership plans
- Highly experienced in helping those with dental phobias

### Services Provided

- Tooth-Coloured (White) Fillings
- Sedation for Anxious Patients
- Teeth Straightening with Braces and Invisalign
- Dental Implants (Replacement of Missing Teeth)
- Emergency Appointments Slots Available (first come first served)
- Hygienist Services
- Private and NHS Care (NHS subject to capacity)

### Opening Hours

Mon, Tue, Wed and Fri **9am-5pm**  
Thu **9am-7pm**  
Saturdays **by appointment only**

**Tel: 01299 271 747**

**[www.cleoburydental.co.uk](http://www.cleoburydental.co.uk)**



## **THE PARISH HALL OFFERS....**

On Saturday October 15th we are showing *Elvis*, the latest film from Oscar-nominated visionary filmmaker Baz Luhrmann, starring Austin Butler and Oscar winner Tom Hanks. The film explores the life and music of Elvis Presley (Butler), seen through the prism of his complicated relationship with his enigmatic manager, Colonel Tom Parker (Hanks).

On Saturday November 19th we will be showing *The Angels' Share*, a bitter-sweet comedy from award-winning director Ken Loach which proves that sometimes all you need in life is a little spirit. Escaping a prison sentence by the skin of his teeth, the wayward Robbie is given one last chance to turn his life around. Together with four friends he embarks on an adventure and discovers that turning to drink might just change their lives - not cheap fortified wine, but the best malt whiskies in the world.

At 6.00pm before the movie, we will be providing an opportunity to learn about whisky in a tutored tasting. Robert Hodge will explain how this timeless drink is made, signposting what to look out for in the glass. You will taste three different whiskies to showcase the diversity of this drink, from the three key regions of the Highlands and Islands of Scotland, and then see if you can identify where a fourth comes from. Spaces are limited, so get your tickets (£15 each for the whisky tasting) in advance from

Gabby Franklin on 01299 271713 or Robert Hodge on 01299 270047.

### **Lunch at the Parish Hall**

From 12.30 to 2pm, every second and fourth Tuesday, the committee invites you to join members of the Friendship Club for lunch in the Parish Hall. We aim to cook tasty, nutritious meals (including a pudding) using fresh ingredients for £3 per person. We will try to help with lifts – please ask. We look forward to welcoming you and perhaps you might stay on and join the Friendship Club in cards, Scrabble and dominoes until 4pm. You need to book a place no later than the previous Sunday by calling 01299 271713. Our first lunch will be on Tuesday October 11<sup>th</sup> (book by the 9<sup>th</sup>). We look forward to seeing you there  
*Robert Hodge*

### **RSVP**

On 12th September 12th I attended a presentation by Restoring Shropshire Verges Project, who have been working to preserve our roadside verges and return them to wildlife meadows and corridors for insects and animals.

They are working and campaigning to persuade local authorities to delay cutting verges until August, to clear away the rank clippings, to scarify the ground and plant yellow rattle seed which inhibits the growth of the rank vegetation such as coarse grass, hog weed and nettles. This allows wildflower corridors to emerge and, when cut at the right time, their clippings can be spread over

the next prepared verges. We learned how managing verges as mini hay meadows would store carbon, replenish the seed bank, restore floral diversity, create habitat and provide nectar and pollen. In addition, the initial cuttings of the "rank" vegetation can create energy through local bio-digesters. And if all that weren't enough, it saves us money! One local authority has saved nearly £4 million by changing their cutting programme to encourage the wildflower meadows.

But it's not just about local authorities. We can all try to develop our own patch of natural habitat. Even a few square yards can make a difference. It seems that yellow rattle is the hero here, fighting off the rank and making room for the beautiful. Who would have thought it?

*Sylvia Cameron*

## **THE HORTICULTURAL SOCIETY**

We are a group of local people who meet at St Mary's Community Room in Love Lane. We have guest speakers, go on garden visits, have social events and raise funds for projects like the pleaching of our Lime trees along the High Street. and the "Learning to Grow Food" project which we organise with local nurseries, primary schools and a special school, all for the maintenance of the town's allotments.

If you are interested in this work, please email me, Linda Ashman, at edandlindaashman@gmail.com

# John Brazier & Co

Accountants & Business Advisors

Accounts – Company, Partnership and Sole Trader  
Tax Returns – Corporation Tax and Personal  
VAT - Returns and advice  
Payroll Service including RTI

For a personal and  
professional service

Contact John Brazier or Sarah Morgan to discuss your requirements on 01299 271473 or email at [info@johnbrazierco.co.uk](mailto:info@johnbrazierco.co.uk). Alternatively, you can arrange a meeting at 53, High Street, Cleobury Mortimer, Worcestershire DY14 8DQ

01299 271 473



## Bumperscuff Rescue

● Body Shop excellence ● Home convenience

**Cost effective car body repairs!**

● Bumper scuffs ● Paint scratches  
● Kerbed alloy wheels ● Small dents

Free no obligation quotes, all work fully guaranteed Call **Andy Taylor** now on **07834 322216** or visit [www.bumperscuffrescue.co.uk](http://www.bumperscuffrescue.co.uk)

### CLEOBURY MORTIMER CARPETS

#### Supplying and Fitting of:-

- Carpets
  - Natural floorings (Cair, Sisal & Seagrass)
  - Vinyls
- Carpets supplied by: Victoria Carpets, Fibre Flooring  
& Alternative Flooring at Unbeatable Prices

#### Contact Details:-

Address: 26 High Street  
Cleobury Mortimer •DY14 8BY  
Telephone: H: 01299 270095  
M: 07739 186163  
Email: [garethleach@aol.com](mailto:garethleach@aol.com)  
or check out our new website  
[www.cleoburymortimercarpets.co.uk](http://www.cleoburymortimercarpets.co.uk)

## INFINITE ELECTRICAL SOLUTIONS

For all your electrical needs:

House rewires

Fuse board upgrades

Electric showers

Need an extra socket or light installed?

No job too small

For a FREE quote

Call Lloyd 01584 811184



## **A DETERMINED CAMPAIGNER**

**Alan Henderson has the drive to overcome autism and to rise above the prejudice that being openly gay attracts. He writes:**

A campaigner who's a former resident of Cleobury Mortimer has started his own website to document his experiences with being gay and living with autism to support others who are similar.

Alan Henderson, 42, who bravely took part in this year's naked bike ride, launched the colourful and informative Alan's Autism Awareness page in August 2019.

He came up with the idea of managing his own website in a bid to combat the stigma attached to the developmental disorder and members of the LGBT community by publishing educational articles.

The site also acts as a support hub for those who are struggling to deal with certain aspects of their hidden disability or sexuality, and want to confide in people who have faced similar adversities.

Alan said: "I decided to start my own website about being both autistic and within the LGBT community as a way to raise more awareness and encourage more acceptance of it.

"I also designed the page to support people as well, because everyone with autism is different.

"The hardest part of being autistic for me, for example, is when there are negative changes to my plans."

Alan hopes the website, which also runs stories about Asperger's Syndrome, ADHD, neurodiversity and cerebral palsy, will influence more equality and fairness.

According to the National Autistic Society, only 16 per cent of autistic adults in the UK have full-time paid employment, while Stonewall reports that 35 per cent of LGBT workers have hidden their sexual orientation through fear of discrimination. This is something Alan wants to help change.

Alan said: "I think we need to continue to strive for better equality and fairness of opportunity for both those who identify as LGBT+ and those on the autistic spectrum.

"I have been bullied and I was so upset by the online abuse. So, we also need to tackle abuse and discrimination."

To find more information visit Alan's website; head to [aaasupport.co.uk](http://aaasupport.co.uk).

## **HOW TO LEARN ABOUT OUR BIRDS**

If you're interested in learning about how to identify the birds you see around our area, and the habitats they use, I highly recommend the **Introductory Birding Course, organised by the Church Stretton Branch of the SOS** (in collaboration with the National Trust, Carding Mill Valley).

It involves evening classroom sessions in the National Trust tea room in Carding Mill Valley, followed by practical field trips to see the birds covered in the previous session. The three leaders are amongst the most competent and experienced birdwatchers in the County, and they've been running the course for many years, so you'll learn a lot. Several CWG members have attended in previous years, and found it very valuable, and enjoyable.

For details go to <https://introbirdcourse.wordpress.com>.

If you know of anyone who might be interested in this course, please pass the info on

*Leo Smith*



### **Grainger Jones your local financial adviser**

Grainger lives in Cleobury Mortimer giving the residents and surrounding areas a dependable financial planning service.

- **Wealth Management**
- **Retirement Planning**
- **Investments & Savings**
- **Family & Business Protection**

An initial consultation is available at no charge

To book an appointment or just have a chat, please contact Grainger below.

tel: 07974 100089

email: [grainger@meridenfp.co.uk](mailto:grainger@meridenfp.co.uk)

website: [www.meridenfp.co.uk](http://www.meridenfp.co.uk)





## What can a Nutritionist help with?

- Digestive issues
- Chronic Fatigue
- Sleeping issues
- Painful periods
- Menopause
- Migraine
- Type 2 Diabetes
- High Cholesterol
- Skin Conditions
- Children's Health
- Anxiety/Depression
- Vegan/vegetarian diets
- Weight Management
- plus many more

Visit [www.eatyourselfbetter.co.uk](http://www.eatyourselfbetter.co.uk) to find out more or book a free mini consultation to see what I can do to help you. 07790521636



## TURNERS GATES

bespoke sizes at standard prices



A small family run business specialising in quality wooden gates to suit all entrances.

Visit our website: [www.turnersgates.co.uk](http://www.turnersgates.co.uk)

Drop us an email: [turnersgates@outlook.com](mailto:turnersgates@outlook.com)

Or give us a call on: 01299 270 965



## TIME TO CLEAN YOUR OVEN? LET US DO THE JOB YOU HATE

AS SEEN  
ON TV

- Ovens
- Grills
- Extractors
- Filters
- BBQs
- Microwaves
- Hobs
- Ranges
- AGAs

Call or go online today for your free estimate

**OVENCLEAN**  
The original oven cleaning specialists

07913 123543  
[ovenclean.com](http://ovenclean.com)





# Stepping Out! Who's Walking, When and Where.

## ROCK PATHFINDERS

October dates and venues for this well established local group:

Thursday, 6th. 10.00am.  
Hawkbatch Forestry car park, off the B4194. DY12 3AF

Thursday, 20th. 10.00am  
Kinver Community Sports Centre, Legion Drive, off High Street, Kinver. DY7 6ET

For further details and other arrangements, visit [www.rockfinders.uk](http://www.rockfinders.uk)

## THE FOOTPATH ASSOCIATION

October is the first month of Autumn, bringing changing colours of the new season. The last couple of months has seen many trees already lose their leaves much earlier than usual. Early leaf fall, often called a false autumn, is caused by stress due to the high temperatures and lack of water this summer. This is a survival mechanism as the trees shed their leaves to conserve moisture. Older, larger trees have deeper extensive roots systems so cope better with the conditions but less mature ones may not recover.

The September work party headed to Milson to instal a kissing gate in place of a dilapidated stile. The ground is still very hard and compacted after the lovely Summer. Any damage to stiles, gates, or paths can be reported directly to us using the link on our website. It is helpful if this could include details of the location. A photo of the work required is particularly useful. The September Social Walk for CMFA members was centred around Tenbury Wells. The circular walk went to Oldwood Common, St Michaels, on to the Cadmore estate, and Berrington before returning to Tenbury. The level of the River Teme is still very low but after the recent rain the countryside has lost some of its parched appearance. The date for the next walk is on the website.

The monthly Parish Walk is on Sunday October 2<sup>nd</sup>. Starting at 10.00am outside St Mary's church for a gentle walk of about two miles in the countryside around Cleobury. There is no charge for these walks and dogs are welcome. The sun shone on the last Walking for Health away day

to Bewdley. The walk of about two miles was along the river from Blackstone Car Park. The Bewdley Museum cafe was a welcome stop for a drink and very tasty cakes! As the cooler weather commences Walking for Health will be based in Cleobury. Starting outside the Market Hall at 10.00 am on the second and fourth Wednesday of each month. Coffee, cake and a social chat are available at the end courtesy of CoCo.

Walkers living locally are fortunate to have many footpaths criss crossing the area. The Golf Club is a good focal point for circular walks. CMFA Walk 17, A Round of Golf, is a lovely 4.5 mile walk. It combines the grounds of Mawley Hall, the golf club and several surrounding fields. This description is based when starting from St Mary's Church but it can start at the Golf Club where the clubhouse is open to non-members for refreshments.

CMFA activities are on our website [www.cmfa.co.uk](http://www.cmfa.co.uk) and also on Facebook.

*Veronica Hargreaves*

**WINDSOR PRICE REPAIR SHOP**  
Automotive

Email: [mikeytwonames@icloud.com](mailto:mikeytwonames@icloud.com)  
Tel: 07468 521816

Unit 1, Hillocks Farm,  
Cleobury Mortimer, DY14 0EB.

<b>MOT</b>	<b>Brakes</b>	<b>Diagnostic</b>
<b>Services</b>	<b>Cam Belts</b>	<b>Exhausts</b>
<b>Repairs</b>	<b>Clutches</b>	<b>Tyres</b>

# Mark Pearce

Landscape, Design and Rustic Garden Furniture

- Fencing
- Patios
- Drives
- Decking
- Garden Sheds
- Summer Houses
- Fence Panels
- Log Stores



And Much More

Top Quality Fully Treated Timber Products

Mobile: 07875425028

Tel: 01746718404

## Robert Bradley Logs

07794 798616



*Seasoned Firewood, Hardwood,  
Softwood or Mixed loads of logs.  
Free Local Delivery*



Fresh milk and cream from  
Cleobury Mortimer

[www.mawleytownfarm.co.uk](http://www.mawleytownfarm.co.uk)

01299 270359



## SKELLERNS

DOORS & WINDOWS



- UPVC Fascias & Guttering
- UPVC Windows, Doors & Conservatories
- General Home Improvements
- Re-roofing & general building work
- Replacement Glass
- Patio Jet Washing



Free No-Obligation quote. FENSA registered company with years of experience

Call Mike on: 01886 812250 or mobile: 07814 577739

[www.skellersndoorsandwindows.co.uk](http://www.skellersndoorsandwindows.co.uk)



The Wyre Forest hasn't always been the peaceful place it is now, with large areas set aside for recreation and wildlife. It was, and still is to a large extent, a resource, providing timber for many different purposes. The 'waste' products of this industry weren't actually wasted if they could be of use: small branches and offcuts were always valued as fuel, birch twigs were bound into besom brooms or stripped and made into whisks.

Medium-sized coppice wood had its own industry, providing the raw material for charcoal production. The oak bark could be removed to supply Bewdley's riverside tanneries with tannin for processing hides. Bewdley Museum has several photos dating from the 19<sup>th</sup> Century of workers (often women) using spoon-shaped metal bark peelers and setting the rounds of bark to dry on racks until they could be transported down Tanners Hill and Bark Hill into the town (search for 'bark peeling' on [www.revolutionaryplayers.org.uk](http://www.revolutionaryplayers.org.uk) to see the photos).

While searching the internet you can find 'Albert Link and bark peeling in the Wyre Forest' by Rosemary Winnall of the Wyre Forest Study Group. Albert kept the industry going for many years, sending bark down to J and FJ Baker's tannery at Colyton in Devon for the production of top quality leather. (Bewdley's last tannery closed in 1928 and Baker's was the only remaining tannery in the country which still used oak bark, although another may be opening near Bristol). This spring the activity was revived by Paul Jackson of Coppice Creations,

working in Ruskin Land. The bark will only come off easily when the sap is rising in the oak trees. A length of oak is supported on trestles and a narrow strip is taken off all the way down using a draw knife. The bark is then cut around the circumference of the limb at intervals of about half a metre and then the peeler is inserted under the bark, sliding it around to loosen it from the sapwood. It can come off surprisingly easily, and you can see and feel the wet of the phloem / xylem system which transports water up to the growing leaves. The photo shows Paul's son Daniel at work.



Bark peeling is part of a virtuous circle of sustainable production. The stripped boughs are used by Paul to make garden furniture and the oak stumps (technically called 'coppice stools') almost immediately start to regrow. The plot will support many kinds of wildlife now it's been opened up to the sunlight, and a tannery that has been making top-quality leather since 1862 using methods centuries old will be able to thrive.



**BILL'S QUALITY METALWORK**  
**5 GREENFIELD ROAD, CRAVEN ARMS, SY7 9QU**  
**Manufacturing Made to Measure Gates and Railings**  
**~Balconies and Staircases, Handrails, Carports,**  
**Structural Steelwork and Mobile Welding Service.**  
**Phone Bill on 07973 248 016 or 01588 673 914**  
**Office for a free quote**



**BAGGINSWOOD**  
 Bagginswood, Cleobury Mortimer,  
 Nr. Kidderminster, Worcs. DY14 8NB  
 Telephone: 01746 718732

**Heath Farm Meats, Bagginswood**

Opening Hours

Wed 8am to 5.30pm, Thurs 8am to 7pm, Fri 8am to 5.30pm, Sat 8am to 12.30pm

**Straight from Our Farm to Table**

We rear & sell all our own beef, pork, lamb & mutton through our shop on farm.  
 We also make our own flavoured sausages, burgers, home cured bacon,  
 gammon etc. No order to large or small.

Hams ● All Poultry ● Honey ● Mawley Milk & Cream ● Ashley's Cakes & Bread ●  
 Jams ● Eggs ● Cheeses ● Apple Juice ● Potatoes ● Meat Pies ● Sticks & Logs

Telephone 01746 718732 with your order to arrange a date & time for collection



## Electrical & Security

**Tel: 07973 112463 (Anytime)**

**01299 489223**



- |                            |                                 |                                  |
|----------------------------|---------------------------------|----------------------------------|
| • Full/ Part Installations | • Landlords & Electrical Safety |                                  |
| • Existing System Updates  | • Certification                 | Part P + Full Scope Registration |
| • Alarm & Security Systems | • Upgrades                      |                                  |
| • PAT Testing              | • Free Callouts and Quotes      | Card Payments Accepted           |
| • Domestic and Commercial  | • For Existing and New          |                                  |
| Properties                 | Installations and Security.     |                                  |
| • Electrical Problems      |                                 |                                  |



**Fast Friendly Service, No Job Too Small**



## FOR ALL YOUR ACCOUNTANCY REQUIREMENTS

[www.fairway-accountants.co.uk](http://www.fairway-accountants.co.uk)

Head Office: 01299 822283  
[team@fairway-net.co.uk](mailto:team@fairway-net.co.uk)

Simon Hector: 07896 439594  
[sjh@fairway-net.co.uk](mailto:sjh@fairway-net.co.uk)



## Philip Dunne's Letter from Westminster

Last month, we reflected with a mixture of great sadness and huge sense of loss, but also remembered with great joy the inspiration which Her late Majesty Queen Elizabeth II gave in devoting her life to the service of others.

She set an example not just to those in public life, but to all of us: how to behave, how to help others, how to bring people together and make people happy. She was the mother of the Nation, the founder of the Commonwealth and the senior stateswoman of the globe. The world shares in our grief.

Sir Winston Churchill, her first of 15 Prime Ministers, heralded her Accession to the throne as launching "a golden age" - "a signal for a brightening salvation of the human scene". And so it proved in so many areas of human endeavour and achievement by her and her subjects over these past 70 years.

We shall probably all remember where we were when we heard the news of Her Majesty's death. Although she was 96 this still came as a lightning bolt of shock in the midst of thunderstorms raging across her Kingdom that day.

I was with members of the Environmental Audit Committee, at a half-full reservoir in Cornwall surrounded by trees. This seemed strangely fitting, giving the commitment Her Majesty showed to the environment. Through her love of nature, she and her devoted husband Prince Philip the late Duke of Edinburgh undoubtedly planted the seed for their family's enthusiasm in championing nature and leading the crusade to combat climate change, decades before this became fashionable. Only last November in her message to international leaders and delegates attending COP26 she said: "The time for words has now moved to the time for action". But it was her love of trees that will be a lasting physical legacy. I suspect she

planted more than anyone else in public life around the globe.

The Platinum Jubilee Queen's Canopy has seen a million trees planted this year alone in her honour, which will be a lasting reminder of her for decades if not hundreds of years to come.

Her only official visit to the Ludlow constituency was in the year after her Golden Jubilee, when she came by royal train to Telford and visited Much Wenlock with Prince Philip to take in the Wenlock Olympian Games, an early precursor to her role in London 2012.

She then showed that her priorities lay with her people, by having lunch in the Discovery Centre in Craven Arms, rather than the gourmet delights of Ludlow. She went on to do a walkabout in the Market Square in Ludlow, where thousands turned out to welcome the first visit by a reigning monarch in more than 300 years. Most visits by earlier monarchs before that had been at the head of an army.

My sincere condolences to the Royal Family on the loss of their, and our, matriarch and monarch.

I know many constituents will join me in wishing His Majesty King Charles III well as he takes up his duties as our Sovereign. It was heart-warming to see that whilst Parliamentarians paid tribute to his Mother in the Chamber on the day after her death, King Charles walked among the well-wishers outside Buckingham Palace. Her example of engaging with us all is already being carried on by her successor.

I write before the State Funeral has taken place which I am sure will give us all the opportunity to mourn her passing in fitting style. God rest Her Majesty. God save the King.

# Do you suffer from heat loss, outside noise or draughty windows like many older properties?

**Bespoke  
Secondary  
Glazing**

Secondary glazing from Lansec greatly reduces draughts and heat loss while retaining the traditional appearance of your original windows

- **Recommended** by Historic England for heritage and Grade 2 listed buildings
- **Barely visible** from inside or outside
- **Colour matched** to your existing windows
- **10 year** material and labour guarantee
- **Local**, family run business



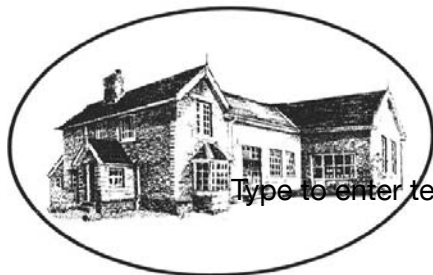
**01299 544013**  
**lansecglz.co.uk**

Unit 4 Blackmanstitch, Long Bank, Bewdley, Worcs DY12 2QW



## Bayton Church of England Primary School

*- Be the best you can be, as a child of God -*



Type to enter text

[www.baytonceprimary.co.uk](http://www.baytonceprimary.co.uk)  
01299 832393  
[office@baytonpri.worcs.sch.uk](mailto:office@baytonpri.worcs.sch.uk)

Call or email to book an appointment to visit our school and meet our staff.

*"We offer an alternative and unique Primary School experience, in an idyllic rural setting. A small family-orientated school with a caring ethos and traditional values, coupled with excellent results. If you want the very best for your child, come and visit us."*

*Ms. Jolanda Simmonds  
Head Teacher*

*\*Spaces currently in Years 4, 5 & 6, and we are also welcoming Parents & Carers of September 2019 intake.  
Governor vacancies – please call for information\**

Rated "Outstanding" in our latest SIAMs inspection (March 2018).

Friendship – Hope – Perseverance – Compassion – Trust – Forgiveness – Responsibility – Respect – Truthfulness

Our school vision: We aim for everyone to be a part of our community, be life-long learners who are confident, enthusiastic, valued and reach their God given full potential.





## NIGHTINGALE NURSING FUND

### 2022 UPDATE

**Who we are.** The Nightingale Nursing Fund is a home nursing charity, number 700911. The fund has three trustees: Debbie Brown, Secretary; Gill Shorter, Treasurer and Rosemary Abbiss, Chairman

The fund covers patients from the local doctors' surgeries: Cleobury Mortimer, Ditton Priors, Highley and the Shropshire patients of Tenbury Wells. You can contact Rosemary Abbiss on 07811 913455

**Why the need for it?** The fund provides care at times of a medical crisis. It provides support for those wishing to care for their relatives at home. It only pays for care when help is not available from other sources. There is no charge, and it covers all age groups.

**What the fund does.** It pays for care from local nursing agencies. The details of patients and their families is confidential and the request for care can be made by a care agency, GP or community nurse.

**When to use the fund.** If there is a need for extra care an agency can be approached to put short term care into the home. The maximum is up to a total of 60 hours care unless more help is needed, then one of the trustees must be approached and / or the Medical Director.

**What happens now.?** There are forms on the web site [www.nnfund.co.uk](http://www.nnfund.co.uk) that the care agency needs to complete for payment. There is no cost to the family or patient.

As the Nightingale Nursing Fund is a charity, money is raised from the local community by fundraising events, bereavement donations, or donations from members of the public or voluntary groups.

Extra funds can be raised if you use Amazon to shop online. Just go to [smile.amazon.co.uk](http://smile.amazon.co.uk) and choose The Nightingale Nursing Fund as your chosen charity.

Rosemary Abbiss

**No.19**  
**The Beauty Room**  
with Jane Weaver

*No.19 The Beauty Room*

Wash away the aches, pains and stress of everyday life by indulging in a relaxing Swedish massage, any combination of back, shoulder, neck, arms and legs, ½, ¾, 1 or 1½ hrs, or treat yourself to a manicure/pedicure, waxing or tinting.

Telephone consultations available to discuss any personal requirements, treatments available at No.19 or in your own home.  
Contact Jane on 07968 582269 or email [19thebeautyroom@gmail.com](mailto:19thebeautyroom@gmail.com)

*Just like the lotus flower we too have the ability to rise from the mud, bloom out of the darkness and radiate into the world!*



Soft furnishing and Interior Design Services

**Masquerade**  
Fabrics Limited

01299 271 680  
36 High Street Cleobury Mortimer near Kidderminster  
Worcestershire DY14 8DQ

Retailers for Sanderson, Harlequin, Monkwell  
Crowson and many more...

Comprehensive design, measuring and fitting service.





## The Lamp Restaurant

15a High Street, Cleobury Mortimer, Shropshire, DY14 8DG

01299 272785 or 01299 271313

Fully Licenced and Air Conditioned

Serving Bangladeshi & Indian Cuisine



**The Lamp Restaurant winner of Currylife award chef of the Year**

Open 7 days a week from 6.00pm until 11.00pm

The Lamp's cuisine, inspired by Sylhet, the second city of Bangladesh, offers a wide variety of choice along with established favourite dishes and a selection of Chef's Specials.

The wide variety of starters and accompaniments chosen by our chef to complement your main course.

Takeaway service offers free delivery up to 3 miles for orders over £15.00.

Find us on Facebook: Lamp Inn Cleobury Mortimer



## Michael Coombes Roofing & Building Maintenance.

Complete Re-roofing, Roof repairs, Pointing & Chimney repairs.

Slabbing & Brick work

Wall & Floor Tiling

Painting & Decorating

Over 20 Years experience in the Cleobury area.

**Call Michael on 07854 047413**

## APSupplies

- ◆ Specialists in equestrian and field maintenance
- ◆ Haylage, hay and straw supplied
- ◆ From chain harrowing to mowing and baling
- ◆ Fencing to ménage maintenance
- ◆ Woodland management and coppicing
- ◆ Concrete pads and sheds all at competitive rates

APSupplies.....Call today for a chat !



Ant Harman: 07779239393

### THE GRAND TOUR OF SCOTLAND

In a world where people can spend many thousands of pounds on travel, there is the occasional spark of common sense. Like buying a car for £500 and driving up to Scotland to cover the coastal route and return home. Four friends in three cars, all putting their hands in their wallets and credit cards to show what could be done.

They're pretty good at doing a deal. Ryan Thomason-Jones found a 2002 1.6 litre Ford Focus on E-Bay, the property of an elderly lady, 110,000 miles on the clock and clearly looked after. Well worth £400. Paran Todd came up with a 1999 1.8 litre Rover 620 that had stood unused on a drive; 54,000 on the clock and £400 to buy. A good clean and checkover plus four used tyres at £80 the set and cam belt at £5.00 plus a minor weld got it through its MoT.

William Hardy shared space with Neil Hagley in his 2006 Saab 93 estate with 130k on the clock and higher price at £750. Quality does cost, of course; the fact that part of the fuel injection was held in place with cable ties notwithstanding.

The three cars left Leamington Spa and headed north on May 8th, the drivers planning to sleep in their charges to save on costs. Ryan slept in his Focus every night and spent about £200 on fuel for the 1500 mile trip. Paran chose either his tent or the Saab according to the temperature, and spent about £250 on fuel. Neil's Saab had Paran under the bonnet in his struggle with the fuel injection

system that finally beat him - he's a handy man with the spanners on less sophisticated motors - and the Swedish entry had to be recovered home. The Ford and Rover made it back on May 13th.

The lads were raising money for 'Special Effects', a charity that helps young people find work in games design, where Ryan works. £570 was raised for that good cause.

So generally a good time was had, apart from iffy fuel injection. In 2023 they plan an upmarket repeat, with a buying target of £1,000 each and the same charity to benefit.

Final word to Ryan: "The Ford and the Rover are in everyday use. You don't have to spend big money on motoring."



*Ryan (left) and Paran with good examples of affordable and reliable motoring.*

### A RARE CADILLAC

With the Borders Classic Bike Show postponed, I took my lady to Great Haywood, in Staffordshire, where they have a mixed bike and car show in the pub car park. I normally judge the bikes, but was asked to look at the cars this time.

A very fine selection was on offer, with a light blue E-Type Jaguar a natural choice. Until I spotted something unusual in the corner of the field.

It was a 2001 Cadillac Seville, with its 300bhp 4.6 litre V8

engine mounted transversely. Quite compact - about Ford Granada size - front wheel drive and a top speed of 150mph.



Right hand drive made it clear it was not aimed at the USA market, but maybe Japan as well as the UK? Owner Keith Bodley explained it was sold by a Vauxhall dealership in Worcester and only 174 found owners in the UK; he estimates this is one of only 17 known survivors of a very rare bred.



*The light grey leather interior was sumptuous.*

On the basis of rarity and the problems keeping such an unusual vehicle in concours standard made this the winner of Best Car. I know the E-Type was drawing a crowd, but this was a truly rare find





# Purrfect Cattery

Comfortable and spacious pens for single or double occupancy  
fully licenced by Shropshire Council

visit our website: [www.purrfectcattery.co.uk](http://www.purrfectcattery.co.uk)

Contact us on: 01299 270565 or mobile: 07968 111415

Or email: [enquiries@purrfectcattery.co.uk](mailto:enquiries@purrfectcattery.co.uk)

## TIRED OF THE SAME OLD BEER?

We've all been there, you've just got home and there is no beer in the fridge. You contemplate popping to the nearest shop\* and then you remember all they stock is Fosters, Carlsberg and some manky looking white cider that hasn't even seen an apple.

Don't worry, we are here for you!

The UK's freshest craft beer subscription service is now live, delivering amazing beer from the UK's best independent breweries to your door. You can choose to join the club and get a case of hand selected beers once a month or just buy the one case as a one-off.

BECAUSE Life is too short for Sh\*t Beer

\*Please note this is not implying any of your local shops have a poor range of beer. Its is a generic statement used for marketing purposes. I imagine your shop probably has nice beer.



Take your fancy smart phone out and scan this QR code. The magic of the internet will unfold right in front of your eyes. Here you can register for more updates, discount codes and ace competitions.



**ALL CHANGE AT  
CLEOBURY RUGBY  
FOOTBALL CLUB**

**Founded in 1991. Cleobury's greatest achievement to date was being the first Shropshire club to play at Twickenham. That was in the junior rank finals of a national competition, when they lost out to Dorking, who had a history of more than 100 years. We have a club we can be very proud of. JR**

**Chair** – After a long association with the Club, helping to set it up in 1991, later performing a number of roles, I am standing down as Chair after 14-seasons. Intending to remain involved, but ultimately retiring to the 'back-benches' to cheer the team on from the side-lines. I have thoroughly enjoyed my tenure as Chair and eagerly look forward to helping the transition to the new group of people.

**New Chair** – Tim Wright becomes just the 4<sup>th</sup> Chair after Dan Bills (three-seasons) and Roy Powell (also 14-seasons) and is relishing the new role and opportunity. Having served the Club in several roles over the years, Tim is ready for the new challenge.

**President** – Since 2009 this vital role is for a three-year

term of office and having completed this commitment for three-seasons (four years due to the inactivity in Covid 2020) Pete Howman now stands down with the grateful thanks of the Club and the Committee.

**New President** – Adrian Robinson from Mawley Town Farm, a stalwart of the pack during the early seasons and for many years a great supporter of the Club with a Pitch Board advertising including the famous slogan 'the pint that doesn't give a hangover', has agreed to serve a three year term and is looking forward to getting more involved.

**Coach** – After a change of job hours and lack of time available David Howard has stood down in this position, the Club thanks him for his efforts over the past four-years and three-seasons which included the Covid inactivity of 2020. We hope Dave retains an affinity and involvement with the Club when his work and family commitments allows.

**New Coach** – Will Giddings has now agreed to take the Club forward and as with any new Coach, there is a new positivity. The players are embarking on a new season with some

confidence, with lots of new young players coming forward. There is a renewed enthusiasm to fitness, to training and a game plan, we just need more existing players to return to training and playing.

**Captain** – after four years and three seasons (including the Covid inactivity of 2020) our longest serving skipper has decided to take more of a back seat. We thank him for the excellent job he did in the role and hope that he can play with some freedom of responsibility.

**New Captain** – Matt Rose has been playing at the Club for a couple of seasons and has agreed to step up to this leadership role. Starting his playing career at Old Luctonians and now working locally, he and his family are enjoying life in the town and he is embracing the job.

*Dave Hinves*

**CMRFC fixtures for October:**

Saturday 1st: Playing away to Burntwood in Staffordshire.

Saturday 15th: CMRFC at home to Clee Hill.

Saturday 22nd: Playing away to Veseyans.

Saturday 29th: Playing away to Handsworth,



**Doddington Lodge**  
Residential Care Home

# Living with us

## Doddington Lodge

*Care and Warmth at its Heart*

... would like to welcome you and your family to Doddington Lodge, our newly renovated, privately owned residential and dementia care home in this historic, tranquil hamlet of Doddington, Nr Cleobury Mortimer. Located on the beautiful Cleobury Mortimer & Shropshire boarder, providing stunning views from every aspect of our home.

... modern bistro dining room and bar with a daily menu created by our accomplished chefs. Individually designed spacious double rooms, perfect for couples to stay together or beautiful single rooms with en-suites and stunning countryside views. Even a hairdressing salon for a little pampering to make a place of well-being.

Doddington Lodge is a place where friendships are made and special moments are shared. We organise many fun activities that everyone can get involved with, whether that's a sing along, arts and crafts, collecting fresh veg from the allotment or just simply helping each other with a crossword in our daily newspaper. Each day is different, we certainly have many happy moments...

Our home is a loving community and family, where you can consider Doddington Lodge a home away from home. We will provide you with all the key information, guiding you through every step of the process, whether you are staying with us for a short or long stay.



*Royal Ascot Ladies Day comes to Doddington Lodge*



*A very special visit from DML Racing, Worcester*

*"There is such a lovely atmosphere & many friendships made. Every step is taken to make each day enjoyable and for everyone to get involved with the activities."*



## Join our team

*and make a real difference...*

Becoming part of the Doddington Lodge family is really something special. Our team is built on a shared purpose, to provide outstanding care for our residents and support for loved ones. We invest in our team members, helping them progress and develop within their roles and career path. More than ever we are looking for the right individuals who can really make a difference. If you believe you have the right skills please email your CV to: [enquiries@doddingtonlodge.com](mailto:enquiries@doddingtonlodge.com) or visit [www.doddingtonlodge.co.uk/careers](http://www.doddingtonlodge.co.uk/careers).

### *Current Vacancies*

- SENIOR CARERS
- CARE ASSISTANTS
- NIGHT CARERS

To apply please send your CV to [enquiries@doddingtonlodge.com](mailto:enquiries@doddingtonlodge.com)



*"I began working at Doddington Lodge over two years ago & what an amazing place to work, a beautiful home with great carers and management, lots of investment has gone into making it into such a wonderful place. Doddington is like my family and I will be forever grateful for having an opportunity to work here x."*  
Georgie - Deputy Manager

[www.doddingtonlodge.com](http://www.doddingtonlodge.com) | E: [enquiries@doddingtonlodge.com](mailto:enquiries@doddingtonlodge.com) | T: 01584 707084

Doddington Lodge, Residential Care Home, Doddington, Nr Cleobury Mortimer, Shropshire DY14 0HJ.



*Remember to follow us*





It has been a busy time, lots of lovely activities, baking, painting and celebrating special events throughout the month. Each day is so different at Doddington Lodge. All the activities are planned and thought-out carefully to make sure everyone is enjoying their day as much as possible. There is truly something for everyone!

With the passing of the Queen, we all wrote heart felt messages, enjoyed a special meal & watched as she made her final journey to Windsor. We shared special memories of the times throughout the 70 years of her reign.

We are looking forward to the months ahead, with lots planned for Halloween and the festive months, which are always a special time here at Doddington Lodge.



## ★ TEAM SPOTLIGHT ★

Introducing Rachel Edmonds, our part-time Chef and Activities Co-ordinator! She's been with us for over 2 years now. Like many of you know, she is a Master Baker, making most of the fabulous birthday cakes here at Doddington Lodge, she really is very talented! Freya, Rachel's daughter also works as a Carer here too, who is due to have a baby very soon which will be Rachel's first grandchild! These are exciting times for the family. Rachel lives in locally in Kidderminster with her partner and her little dog Bob, who often pops in to visit residents and members of the team. Rachel has also a special bond with the Doddington Lodge Ducks, as they follow her around once she had fed them.

Rachel explains...“There is a real job satisfaction in looking after and entertaining our residents, it's fulfilling when you see the smiles on their faces. With Christmas on it's way, along with Rachel List also an Activities Co-ordinator, we are busy arranging lots of exciting activities for Christmas, including a visit from the man himself, Father Christmas.”

Rachel is a very special member of the team and is adored by the residents and all the Doddington Lodge Team. Thank you Rachel for all your hard work.

*Rachel Edmonds*



## CARTER'S ANTIQUES



We are looking to purchase all manner of antiques, jewellery, coins, medals and curiosities.

For a free valuations kindly telephone  
**John Carter: 07779 311792**  
 Or email: [johnbarney743@gmail.com](mailto:johnbarney743@gmail.com)

## SINGING LESSONS

Professional singer and experienced teacher recently moved to this area  
 Vacancies available

All styles, ages, standards welcome  
 Contact Angela Kazimierczuk on  
 07870 506655



**Natalie Taylor** Dip CFHP MPS Pract.

**Specialist Foot Health Practitioner**

Specialising in:-

- In-growing toenails
- Fungal infections
- Nail trimming
- Verrucae
- Calluses
- Corns

All from the comfort of your own home.

If you would like to make an appointment, please call on **07779 113982** or **01584 890112**



## COUNTRY SKILLS

CPCS/NPTC Approved—fully insured

- Outside Renovation
- Tree Surgery, Hard Landscaping
- Slabbing and Fencing
- Decking, Roofing
- Contract Mowing

Call for a free quotation

R. Price & Sons

Mobile: 07967 140720 Email: [roger@country-skills.co.uk](mailto:roger@country-skills.co.uk)

## Painter/Decorator Christine Smith

Friendly, local, female professional. Any job considered: including Indoor/outdoor, walls, windows and doors, wallpaper & preparation. DBS checked. Fairly priced. Free quotes.

**Call: 07977296335**

**E: [clsartcontact@gmail.com](mailto:clsartcontact@gmail.com)**



## Precious Memories

*Funeral Celebrant - Carole Clayton*

07971 543790— 01584 890007

South Shropshire - North Herefordshire - North Worcestershire

[Celebrant@preciousmemoriescelebrant.net](mailto:Celebrant@preciousmemoriescelebrant.net)

[www.preciousmemoriescelebrant.net](http://www.preciousmemoriescelebrant.net)

FB: @preciousmemoriescelebrant

*Everyone has a story to tell—I'd be honoured to be the one to tell the story of your Loved One.*

**Claire Bradley**  
*Floral Designs*

Florist for all occasions, specialising in wedding and funeral flowers

Winner of the Matrimony Award 2020 Best Wedding Florist  
 Nominated for 2021 Matrimony Awards

Christmas workshops available

Email: [clairebradley1@icloud.com](mailto:clairebradley1@icloud.com)  
 01299 270415 or 07980 580770



## Domestic oil-fired boiler breakdown & maintenance services.

27 years' field-service experience with leading UK boiler manufacturer Worcester Bosch.

**Donovan Taylor**

**Tel: 01299 828670 or 07807 837040**

[donovan.taylor@sky.com](mailto:donovan.taylor@sky.com)

[www.greenstar-boiler-repairs.com](http://www.greenstar-boiler-repairs.com)

Caring about your environment and providing an honest, professional & reliable service you can trust



A small local business.

I am a qualified lawyer with over 30 years experience offering a personal and approachable service.

I undertake specialist will drafting, lasting powers of attorney, deputyship applications and probate.

*"I've used Mandy at Westons Wills and Probate numerous times over recent years covering all aspects of her expertise. Her guidance on the way forward and solutions to issues that she has suggested has been excellent. She is extremely communicative and responsive, and handles difficult situations with compassion and empathy. I have happily and confidently recommended her services to everyone I know that would benefit from her services."*

*"Mandy Weston of Westons Wills and Probate is a very professional and knowledgeable person. She has now become my 'go to' legal adviser and has taken on many legal tasks for me and my family. Wills, Probate, Inheritance Tax and Powers of Attorney. I trust her judgement and experience to act in mine and my family's best interest. I would highly recommend her legal services to anyone."*



**Contact me today**

**"Great expertise and a friendly professional manner"**



**Contact Mandy Weston Phone 01299 405873 Mobile 07931 411733**

**Email** [mandy@westonswillsandprobate.co.uk](mailto:mandy@westonswillsandprobate.co.uk) **Website** [www.westonswillsandprobate.co.uk](http://www.westonswillsandprobate.co.uk)

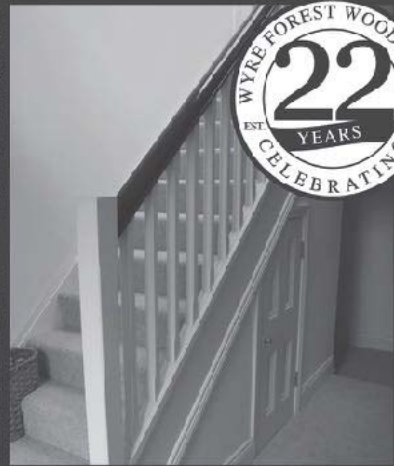
**Address** The Old Snuff Mill Warehouse, Park Lane, Bewdley, Worcestershire DY12 2EL



**WYRE FOREST  
WOODCRAFT**  
purpose made joinery

**Specialists in the Manufacture  
of Purpose Made Joinery**

- Tailor Made Timber Windows
- Traditional and Contemporary Style Timber Doors
- Custom Made Staircases
- Bespoke Conservatories
- Made to Measure Gates



TO SEE EXAMPLES OF OUR FULLY FACTORY FINISHED JOINERY VISIT OUR WORKSHOPS AND SHOWROOM


[www.wyreforestwoodcraft.co.uk](http://www.wyreforestwoodcraft.co.uk)

01562 68100 | [enquiry@wyreforestwoodcraft.co.uk](mailto:enquiry@wyreforestwoodcraft.co.uk)

Oldington Lane | Firs Ind Est | Kidderminster | Worcestershire | DY11 7QN



**IRENA** S.A.C DIP. (DIST). N.C.F.E. M.C.F.H.P.  
FOOT HEALTH CARE PRACTITIONER




All your foot problems dealt with:-

- Foot health check • Verrucas etc.
- Corns • Medical Manicure
- Callus • Medical Pedicure

Free vascular Doppler Check of your feet

The Old Farmhouse  
Button Bridge, nr Bewdley  
DY12 3AW



Mobile visits available  
01299 841 277  
hessins@gmail.com

**Paul Harding**  **Tree Services**

- Tree surgery and felling
- Woodland thinning & maintenance
- Hedge trimming & grass cutting
- Supplier of hardwood logs, kindling and garden bark

•NPTC certified fully insured. Domestic and commercial work undertaken.  
Tel 01584 890 993 Mob 07970 878 224

**Hollywaste Holiday Lets**

Our 2 bedroom (ensuite) cottage, sleeps up to 6 adults, situated in Hollywaste, Cleobury Mortimer. Fully equipped kitchen, open plan living room with log burner, dining area and downstairs WC. Includes Freesat and fast WiFi. There are enclosed & open decking areas outside, to take advantage of the beautiful countryside views, and a grassed area for outdoor games. Open all year round and welcomes adults, children, 1 large dog or up to 2 small dogs

Discount of 10% available for locals simply quote "keepitlocal" at the checkout

Events we can accommodate:  
Staycations, Pamper weekends, Shooting weekends, Wedding venue, Minimoon stays, Stargazing weekends, Cookery weekends & events, Camping and caravan pitches are also available!  
If you're interested in hiring our space or land for any event and time frame.

Tel: 07962 151322 Email: [hollywasteholidaylets@gmail.com](mailto:hollywasteholidaylets@gmail.com) FB: <https://www.facebook.com/HollywasteHolidayCottage>  
Website: <https://hollywasteholidaylets.squarespace.com> for more information

 **Kingfisher Crafts**  
Sally Serrell-Cooke  
07890 721657 | [kingfishercrafts299@gmail.com](mailto:kingfishercrafts299@gmail.com)  
Visit me on Etsy and Instagram: **KingfisherCrafts299**



New Baby Hampers (Travel Changing Mat, Bibs, Nursing Towels, Quillow) \*  
Placemat Sets \* Wine Gift Bags \*  
Cafetiere Jackets \* Festive Gifts

**NEWS FROM THE  
LIBRARY**

The Friends are stirring after a long sleep and benefitting from new blood with new ideas. The first is a **Work from Home Meet-up**. Organiser Delany Collyer explains:

We'll meet from 7-8:30pm on the third Wednesday of each month at the library

This group is for people who work from home and wish to connect with other work-from-home professionals. We will get together regularly for fun, snacks, and conversation in the Library. Hope to see you soon! Our first meeting will be Wednesday, October 19<sup>th</sup> at 7pm.

For more information, contact the Friends of the Cleobury Mortimer Library at [FOCML@outlook.com](mailto:FOCML@outlook.com) or reach out via our Facebook page.

*Delaney*

**The Nearly Dead Poets' Society is well established and always welcomes new members. To give you an idea of our creative drive that produces poetic works on a particular subject, this is Sylvia Cameron's offering on the subject of dusk.**

It's a funny old word.....dusk  
It doesn't sound quite right  
For that tranquil moment  
before it gets dark  
When the day transforms into  
night.

And how is it different from  
twilight I ask  
Which seems such a lovely way  
To communicate so eloquently  
That moment twixt night and  
day

In France they call it crepuscule  
Which, if anything, sounds  
worse  
It sounds more like a nasty  
boil  
Quite unsuitable for verse.

The Germans call it  
Dammurung,  
Which sounds a bit like cursing  
A word that does not lend  
itself  
To rhyming and to versing

In Greece they call it lykofos  
Another ugly sound  
You'd think for something so  
beautiful  
They might have shopped  
around.

For a word a bit more fitting  
For the closing of the day

When the sun dips on the  
horizon  
And the daylight fades away

But you haven't heard the best  
one yet  
Which conjurs up smelly  
drains  
And that's the sweet word  
Skumring  
Chosen by the Danes

So if that's the competition  
From our European friends  
I think I have misjudged poor  
dusk  
And I must make amends

Cause I realise I was hasty  
In my censure of our word  
For you must admit it's far the  
best  
Of those others we have heard

So take a parting bow sweet  
dusk  
For you have won the fight  
Your honour it is now restored  
As you go gentle into night.  
*Sylvia Cameron*

Another established club is for  
Creative Writers. with meeting  
dates in the Social Calendar.  
We will publish outstanding  
works from both these sources  
as space on the crowded  
Clarion pages allows. *JR*

**Sorry to hear that Jenny of Shoe  
Box fame is pottering off to  
Hampshire. She will be  
missed. So I will be doing the  
Shoe Boxes for the foreseeable  
future; there's no way I can  
match Jenny's endeavours, but I  
will try.  
My contact number: 07976 307**

**MORE ABOUT SHOE BOXES**  
**For Boys and Girls:**  
Toothbrush & toothpaste, hair  
accessories/brush, soap & face cloth,  
stationery & paper, gloves, hat & scarf,  
new socks/underwear, a soft toy, game,  
puzzle, small musical instruments, toy  
vehicles, small ball, sweets (use by date  
from June), a photo and message from  
yourself.



**CARDS, GIFTS, HOMEWARE, HARDWARE AND EVERYDAY ESSENTIALS!**

Friendly Staff, and a great range of stock with prices to match!

If you need it, and you want it! We've probably got it!

Pop inside before you pop online!

**18 High Street, Cleobury Mortimer**

**Tel: 01299 489590**

**Email: [cleoburrs.onthehighstreet@gmail.com](mailto:cleoburrs.onthehighstreet@gmail.com)**

**Like our Facebook page CLEOBURRS**

**Keep up to date with the latest products!**



**GW**

## **Tree Stump Removal**

Commercial and residential.

**Fully insured, qualified and professional.**

**Your property left neat and tidy.**

**Happy to give quotes with no obligation.**

**Ring Sam: 07787095668 or 01299832549**

**Email: [sam@gwstumpremoval.co.uk](mailto:sam@gwstumpremoval.co.uk)**

## **Rachel Siddall**

DipCFHP, MPSPract

Footcare in the privacy of your own

home:

Nail trimming  
Ingrowing toenails  
Corn removal  
Thickening nails  
Callus reduction  
Verruca treatment  
Diabetic foot care



**07478 007913**



## **Hobbs Building Services**

EST 25Years.

A Total Plastering, Maintenance and Building Service for your home,  
business and outbuildings.

Insurance work undertaken

Emergency call out service for general plumbing, roofing, boarding up damaged doors and  
windows. For a free quote please call;

Ian on; 07967190742

Email: [hobbsbuildingservice@yahoo.co.uk](mailto:hobbsbuildingservice@yahoo.co.uk) Or Call/Text Kelly on; 07790085307





## Clebury Mortimer Benefice Church services throughout the Benefice in October

### St Mary's Clebury Mortimer

Sunday 2<sup>nd</sup> October– 10.00am Harvest Festival Service  
Sunday 9<sup>th</sup> October - 8.30am and 10.00am Eucharist  
Sunday 16<sup>th</sup> October – 10.00am Eucharist  
Sunday 23<sup>rd</sup> October– 10.00am Eucharist  
Sunday 30<sup>th</sup> October – 10.00am Benefice Eucharist

### St John the Baptist, Doddington

Sunday 2<sup>nd</sup> October – 11.00am Eucharist  
Sunday 16<sup>th</sup> October – 3pm Evening Prayer

### St Michael and All Angels', Hopton Wafers

Sunday 2<sup>nd</sup> October - 9.30am Eucharist  
Sunday 16<sup>th</sup> October– 9.30am Harvest Festival

### St John the Baptist, Kinlet

Sunday 9<sup>th</sup> October– 11.15.am Eucharist BCP  
Sunday 23<sup>rd</sup> October – 6.00pm Harvest Evensong BCP

### St George's, Milson

Sunday 2<sup>nd</sup> October– 6.00pm Evening Prayer  
Sunday 16<sup>th</sup> October – 9.00am Eucharist

### St Mary's, Neen Savage

Sunday 2<sup>nd</sup> October– 6.00pm Thanksgiving and Memorial Service for Queen Elizabeth  
Sunday 16<sup>th</sup> October – 9.00 Eucharist BCP  
Friday 28<sup>th</sup> October – 6.00pm Harvest Supper

### All Saints', Neen Sollars

Sunday 2<sup>nd</sup> October – 11.00am Village Worship  
Sunday 9<sup>th</sup> October – 11.00am Village Worship  
Sunday 16<sup>th</sup> October - 11.00am Village Worship  
Sunday 23<sup>rd</sup> October – 11.00am Eucharist



### **'Drop in at St Mary's' - every Thursday, 10.00-11.30am**

- for coffee and a chat, if you are feeling lonely and confused, have lost the confidence to go out or have no-one to talk to. If you have problems and are struggling to sort them out or just wish to have a quiet place to sit. This opportunity is free and provides a peaceful environment to sit in the company of others and listen and talk if you wish to.

**The Church Office is open Tuesday and Thursday from 9.00am-3.00pm**

**Contact details: Grace Johnson cleburychurch@hotmail.com**

**Tel: 01299 272916**

# Cleobury Opticians

NHS & private eye tests ♦ FREE children's glasses

FREE NHS glasses ♦ Home visits



Opening Times-	
Tuesday	9am-1pm 2pm-5pm
Wednesday	9am-1pm 2pm-5pm
Thursday	9am-1pm 2pm-5pm
Friday	10am-2pm
Saturday	9am-1pm

[www.cleoburopticians.co.uk](http://www.cleoburopticians.co.uk)

16 Church Street, Cleobury Mortimer, Kidderminster  
DY14 8BX

Tel: 01299 270012

Email: [cleoburopticians@outlook.com](mailto:cleoburopticians@outlook.com)



All Aspects of carpentry work undertaken

Level 3 City & Guilds in Carpentry & Joinery, 20 years of experience

Tel: 07854 032750

Email: [duncpearce1@gmail.com](mailto:duncpearce1@gmail.com)

## Stewart Mumford Architectural Services Bespoke Architecture

Great value personal service backed up with extensive local knowledge, established links with other construction professionals to ensure comprehensive packages specifically tailored to individual needs.

Initial consultation free of charge.

Specialist in Works to Listed Buildings, Affordable Houses, Open Market Houses, House Extension and Alteration, Barn Conversion and Commercial Projects.



T: 01299 271068

M: 07977 921039

E: [office@stewartmumford.co.uk](mailto:office@stewartmumford.co.uk)

## Simon Morton

### It's All a Matter of, um, Timing

Gardening is a little like comedy. It's about...

#### Timing.

Over the years, I've come to accept that most of my jokes will die on their backsides (apart from the one about brown toast - and that only works for a *very* select audience). As friends have pointed out on numerous occasions, I'm just not naturally funny - I don't have 'funny bones'. Alas, dear reader, based on the state of my borders at the time of writing, I'm not much of a gardener either.

#### And I blame it *all* on timing.

When I caught the gardening bug, I assumed success would come from a lot of hard work (digging, weeding, mowing), a little artistic flair (creating eye-catching colour schemes from different plants) and a shedload of persistence (surely the 'secret sauce' to most successful ventures). I had completely missed out the important but rarely discussed cerebral/project management bit. You know, the part where mastery of Excel spreadsheets and forward planning underpins any grand horticultural plan.

It's this lack of forethought that has left my garden looking patchy and chaotic as we come to the end of the Summer. And when I say patchy and chaotic, I'm being charitable - I've got plants that have long since given up the ghost alongside others that are having a whale of a time, dominating everything. I've got short plants, tall plants, bright plants and dull plants. Bare patches and areas where you almost literally can't see the wood for the trees. It's a mish-mash of epic proportions and a right old mess.

Now, of course, I know I could easily blame the ridiculously hot and dry weather of the past few months or the fact that my weeding regime hasn't quite been up to scratch this year, but the brutal truth is that I didn't get my act together when *planning* the planting this year. Actually, scratch that - I've been winging it for the previous five years, and now it's starting to show.

I'm quickly discovering that garden planning requires more than a rough idea of where you want to plonk your plants. There are soil types to consider. When the things will actually flower, and for how long, and in what colours. How high will they grow? Where's your sun/shade? Will they become invasive and take over the whole patch (*hello there, Verbena Bonariensis*)? Annual or Perennial?

It's a seemingly endless list and the fact that I'd only scraped the surface of a couple of these in my previous attempts at planning has bitten me on the bum. It's time for a serious rethink (heck - I may even crack open an Excel spreadsheet).

The good news is that it's getting to that time of year when I can loll about the house, surrounded by gardening books and magazines and start doodling. Like a drowsy toddler, the garden has stopped shouting quite so much for my attention and is beginning to drift off into its winter slumber. This will free me up to start planning - *properly this time* - for next year's displays.

Like I told you - this gardening lark is all about the timing.

*Simon Morton*





## A M Plumbing & Heating

- \*General plumbing
- \*Oftec approved
- \*Bathrooms
- \*Oil boilers
- \*Hot water cylinders
- \*Servicing
- \*Central heating
- \*Power flushing

**Call Today: 07565 181554**

## CLEOBURY CARPENTER

New to the area – Est since 2006

All Aspects Of Carpentry & Joinery

Your Local 'Handy Man'

No Job Too Big Or Small

Contact Joe - 07752 463 651

hurleyhomesltd@outlook.com

# Quality firewood for sale

We source our wood from a reputable and sustainable source.

Can deliver up to 20 mile radius from Bayton (DY14 9NA).

We can do multiple and large loads.

Please call to enquire on pricing.

**John Edwards 07531025018**



H.C.P.C Number CH22527

## Cleobury Chiropody Janet Manley

Qualified Chiropodist  
MSSCh. MBChA  
BSYA (reflex) REIKI Master

Tele:- 01299-272841

Mob:- 07805-268439

Email: janetpmanley@yahoo.co.uk

2, Tenbury Road,  
Cleobury Mortimer,  
Kidderminster,  
Worcs.  
DY14 8RB

## A Round Of Appaws

Professional Dog Groomer  
C&G Levels 2 & 3 Diploma

Fully Insured

Call or text Jules on  
07368359144

aroundofappaws1@gmail.com



facebook  
Instagram

## A. Farr Painting & Decorating

Give your home a beautiful new look....

Contact:

andyfarr12345@gmail.com 07815 855340

## Lisa Steward Ironing services

Hopton Wafers



Please call: 07581065436 for more information



# Borders Classic Bike Show 2022



New Date

Sunday 9th October 2022



\* Classic Bikes on Display \*

**CLEOBURY CARPENTER**

New to the area – Est since 2006  
\* Autojumble \*  
All Aspects of Carpentry & Joinery  
Your Local 'Handy Man'  
No Job Too Big Or Small  
Contact Joe - 07752 463 651  
jnrlexhometo@outlook.com

\* Famous All Day Breakfast \*

**LACON CHILDE SCHOOL, Cleobury Mortimer**



**Sunday 9th October 2022**

10am – 4:30pm

£5 entry

Pay on entry to car park.

Cards are accepted.



[www.bordersbikeshow.com](http://www.bordersbikeshow.com)



## More Clarion Smalls

### GUTTER CLEANING SERVICE

No ladders or scaffolding needed.  
Can reach any awkward place.

All residential and commercial

Competitive rates

Call Ian on 07870384096

This small box advert costs £34.00  
for six months.  
With 1,000 copies printed and circa 750  
visits a month to our website, this  
is one of the most effective places to  
advertise your business.  
Call the editor on 01299 270642  
or email [uncle.jim@icloud.com](mailto:uncle.jim@icloud.com)

## HIS & HERS

### Dog Grooming Parlour

All breeds and  
Cross breeds professionally  
Trimmed and Groomed



J. A. Guest

Tel: 07790 796 027

Washing Machine  
Repairs and Sales  
**JULIAN BREAKWELL**  
Telephone 07791 633 746  
Repairs to all makes, including  
Bosch, Hoover, Zanussi and  
Hotpoint  
**NO CALL OUT CHARGE**  
**FIXED LABOUR COST**

## Ever After

- Breakfast club
- After school club
- Holiday club
- "Forest schools" outings
- 15hrs education funding
- 24U funding
- Age ranges: 3 months to 11 years



Day Nursery  
Cleobury Mortimer

Please contact us on 01299 272 777  
Or Call in to see us anytime.

Friendly, Caring Environment for the Community

**PAUL LYNCH PLASTERING SERVICES**  
Recently relocated. Offering all aspects  
of plastering.including making and  
repairing mouldings, cornices, etc.  
Fully insured, references available.

**07890 049 592**

or

**01299 272931**

## Piano tutor

*Francis Engleheart*

*All ages — I specialise in teaching adults  
without previous experience*

*I come to you*

07710 288526 • [fengleheart@hotmail.com](mailto:fengleheart@hotmail.com)

**S. L. CARTER**  
**PROFESSIONAL PAINTER AND  
DECORATOR**

**PLASTERING, TILING, COVING AND  
GLAZING**

**CLEOBURY MORTIMER**

**TEL: 01299 272868**

**MOBILE: 07815 483 029**



Such sad news about Her Majesty Queen Elizabeth II although she was still meeting prime ministers and others two days before the end. Although death is always a shock when it happens, at least she was spared a long slow decline and lived to a good age. Good luck to King Charles III who has a number of challenges to face including the future of the Commonwealth now being steadily purchased by China. So far, he has been extremely active in visiting all the nations of the United Kingdom and has been received with a vast tide of goodwill. I sincerely hope that this continues.

Yet again, it appears that race is a crucial factor in the numerous child grooming scandals that have come to light around the country. The nearest to home (so far) in Telford involved the abuse of over 1000 young girls over decades with blind eyes being turned by police, social services and other agencies. The situation was not helped by a decision by Telford Council to suspend taxi licensing enforcement because of a fear of accusations of racism and this is a common reason for inaction by all the agencies involved. West Mercia Police were aware as early as 1999 of the identity of members of the Pakistani community responsible but took no action until ten years later and seven men were finally jailed in 2013. Given the number of girls involved, those seven were either very busy boys or there are others out there who have never faced justice. Even the Chair of the subsequent inquiry into the Telford events has used very tortuous language, merely mentioning that those involved were 'of southern asian' heritage which would be an insult to me if I was of Indian, or Sri Lankan origin. He claimed that the exact ethnic origin was unclear as this was not formally recorded. This should not be surprising as even in 2019, South Yorkshire Police, who were at the centre of the Rotherham scandal, were still not recording the relevant detail of those arrested. All Police forces have now been instructed to do this so I hope we have seen the end of these scandals. However, I'm not holding my breath...

It appears that a return to 'basic policing' by putting officers out on the streets to raise the profile and engage with the community results in a reduction in crime. Who knew? Already Greater Manchester police who have trialled the system have noticed that crimes solved are up 20% under their no nonsense chief constable who is on record as refusing to 'take the knee' saying he would kneel 'before the Queen, God and my wife' but that was it. Similar improvements have been recorded in Bedfordshire, Essex and the West Midlands when the new approach was tried. The new Metropolitan Police commissioner, Sir Mark Rowley, has also signalled a similar approach as he faces the daunting task of restoring pride and public confidence in his battered organisation.

A leading ballet school has condemned its own activity as 'racially problematic and too binary'. Entry requirements do not now include proficiency in ballet although it will remain on the curriculum... Apparently ballet was built around particular white and European ideas and in future gender neutral terms such as 'dancers/people/folk/everyone/everybody' should be used other than boring and non inclusive terms such as 'men' and 'women'.

Similar action has been taken by the Financial Conduct Authority in respect of technical terms used in IT such as master, slave, black hat and blacklist. Apparently these terms can be seen as pejorative and should be replaced by 'primary' and 'secondary'. Given that these are internationally used terms, the scope for confusion here is endless...

Michael O'Leary, Chief Exec of Ryanair is famous for speaking bluntly. When asked whether, after 30 years in the job, he was considering retirement, he replied that he had four teenage children and had 'absolutely no \*\*\*\*\* intention' of spending more time with his family...

*Ariadne J Grumpy*

# NEWSPAPER DELIVERIES



Monday- Saturday

Covers Cleobury Mortimer and Clee Hill

Contact Laura Callwood on 07495 708404

or lauracallwood@outlook.com

# WILMAS CLEANING & IRONING SERVICES

Experienced cleaner, very trustworthy and reliable. If you would like your ironing done you can drop to my house. I am available weekdays, and weekend's times/days flexible. References are available upon request.



Please contact me for further details on

**07891416477**  
**01299 272 941**



Number Nineteen

# No.19 Denture Repairs

Dental Laboratory

## SPEEDY, QUALITY DENTURE REPAIRS

Cracked/broken dentures repaired the same day.

A 1 HOUR service is available for when time is of the essence, just call to make an appointment .

19 Lower Street, Cleobury Mortimer, DY14 8AL

Email: [nevilleweaver@googlemail.com](mailto:nevilleweaver@googlemail.com)

Phone: 07973856733

All work undertaken by a GDC registered technician



**A.B. Plastering**  
Plus Traditional Lime Plastering

**Adrian Booton**  
PLASTERER

4 Severne Green, Bayton  
Nr Kidderminster, DY14 9LL

Tel: 01299 832 838  
Mobile: 07974 582 524



**TOTAL PROPERTY MAINTENANCE**

Fireplaces built for multi-fuel burning stoves,  
Plastering, Building & General Maintenance

**Rob Taylor**

Mobile: 07944 074540

Landline: 01299 832734

Email: [rptbuilding@hotmail.co.uk](mailto:rptbuilding@hotmail.co.uk)

## E.PURSLOW & SON LTD

Stone, Gravel, Cement Supplies

Approved Coal Merchant

Calor Gas Stockists

Tarmacadam Specialists

Car Parks and Driveways

Constructed.

**TEL: 01299 270314**

David Ward  
**firewood**



Do you need a dependable consistent quality supply of seasoned or kiln dried hardwood and softwood firewood?

Cut and split to suit and delivered in breathable 1.2-cubic metre bags, so no need to restack.

Small delivery vehicle, fitted with crane, can deliver to most locations and situations.

CALL DAVID TO DISCUSS YOUR REQUIREMENTS:  
Mobile: 07866 441154

*Alan Smith Aerials*  
*Digital TV Installations.*

*Freeview* aerials fitted and distributed around the house.

*Freesat* box, dish, and cable supplied and fitted. One off payment, **No contract or subscription required.**

Extra points, Repairs, New fits, Set ups, Multi room.

All work is carried out by a *Local*, fully qualified and insured installer.

**01299 270007 or 07970 675728**

## THE CLARION SOCIAL CALENDAR

Date	Time	Details	Contact	Telephone
Sun 2 <sup>nd</sup>	10.00	Parish Walk starts from St Mary's church. PAGE 21		
Wed 5 <sup>th</sup>	6-7pm	Late Night at the Food Bank, Market Hall		
	7.30	Whist Drive, Doddington Village Hall		
Thurs 6 <sup>th</sup>	10.00	Rock Pathfinders step out from Hawkbatch car park. PAGE 21		
		GREEN DOMESTIC WHEELIE BINS EMPTIED TODAY		
Sat 8 <sup>th</sup>	3.00	Apple Day at the Fighting Cocks in Stottesdon		
	7.30	Murder Mystery Evening at Clows Top Victory Hall. PAGE 7		
	7.00	Northern Soul Event at Stourport Civic Centre. PAGE 11		
Sun 9 <sup>th</sup>	10.00	The Borders Classic Bike Show is back at Lacon Childe School		
Mon 10 <sup>th</sup>	6.30	Creative Writing Group meets in the Library, Love Lane		
	7.30	Horticultural Society meet at St Mary's Community Centre. PAGE 5		
Wed 12 <sup>th</sup>	10.00	Walking for Health starts from the Market Hall. PAGE 21		
	10.00	CoCo Coffee Morning, Market Hall		
	7.30	British Legion meets at Sports & Social Club, Love Lane		
Thurs 13 <sup>th</sup>		BLACK & PURPLE WHEELIE BINS EMPTIED TODAY		
	7.30	Fun Quiz Night, Fighting Cocks, Stottesdon		
Fri 14 <sup>th</sup>	8.00	Bingo Night at Doddington Village Hall		
Sat 15 <sup>th</sup>	9.30-12.30	Cleobury Country Farmers Market, in and around St Mary's Church		
	7.30	Flicks in the Sticks presents "Elvis", King of Rock n Roll some say!		
Wed 19 <sup>th</sup>	7.30	Whist Drive at Doddington Village Hall		
Thurs 20 <sup>th</sup>		GREEN DOMESTIC WHEELIE BINS EMPTIED TODAY		
	10.00	Rock Pathfinders' walk starts from Kinver Sprots Centre. PAGE 21		
Fri 21 <sup>st</sup>	7.30	Charity Quiz Night at the Sports & Social Club. PAGE 13		
Sat 22 <sup>nd</sup>	12noon	Soup Lunch at St John's Church, Doddington. PAGE 7		
	1.30	Jumble Sale, Victory Hall, Clows Top. PAGE 7		
Tues 25 <sup>th</sup>	7.30	Grey Wolf entertain at The Hatch, Worcestershire.	01584 881564	
Wed 26 <sup>th</sup>	10.00	Walking for Health, from the Market Hall. PAGE 21		
	10.00	CoCo Coffee Morning, Market Hall		
	7.45	Clows Top Gardening Club meet at Victory Hall with Wade Muggleton PAGE 5		
Thurs 27 <sup>th</sup>		BLACK & PURPLE WHEELIE BINS EMPTIED TODAY		
	7.30	Bingo Night at the Fighting Cocks, Stottesdon		
Fri 28 <sup>th</sup>		Charity Quiz Night, Kinlet Village Hall. Booking essential. PAGE 13		
	8.00	Bingo Night, Doddington Village Hall		
Mon 31 <sup>st</sup>	7.30	Nearly Dead Poets Society meets in the Library		
		<b>LOOKING FORWARD TO NOVEMBER.....</b>		
Wed 2 <sup>nd</sup>	7.30	Whist Drive at Doddington Village Hall		
Thurs 3 <sup>rd</sup>		GREEN DOMESTIC WHEELIE BINS EMPTIED TODAY		
		<b>AND A REMINDER ABOUT THESE REGULAR LOCAL EVENTS....</b>		
Mon	8.00	Bingo in the Market Hall		
Tues	2.00	The Friendship Club meet in the Parish Hall		
Thurs	10.00	Drop In at St Mary's to chat and maybe share a problem?		
	7.00	Lessons in the Birth Dance and good health. Market Hall		

# Firewood

**Seasoned logs, barn dried & ready to burn.**

**Free local delivery -01584 890993 or 07970878224**

**Various size loads available**



**Paul Harding Tree Services**





# Lower St Garage

7 Lower St, Cleobury Mortimer. DY14 8AA



- M.O.Ts on cars, motor bikes & small commercial vehicles
- Tyres, Tyre fitting,
- Puncture repair and Tracking.
- Diagnostics, Air conditioning
- Welding.
- Service and Repairs to most vehicles.
- Delivery and Collection Service Available

**Contact The Team at Lower St Garage on: 01299 270208**



## Stove Installations, Service and Repair

- All solid fuel wood burners and boilers supplied and installed
- Chimneys relined and twin wall systems built
- Chimney Pots, Cows, Carbon Monoxide alarms and Air Bricks fitted
- All Stoves and Fires serviced including chimney sweep
- Hetas Landlord Safety Certificates

Tel: 01299 272712 Mbl: 07807 343006  
email: [info@rweaversservices.co.uk](mailto:info@rweaversservices.co.uk)



Family run business of 30 years, call us for a free no obligation quote

**Finance available, buy now and pay later**

5 Lupin Works, Worcester Road, Kidderminster DY10 1JR  
Phone: 01562 822855 – Email: [sales@twshq.com](mailto:sales@twshq.com)

**Tele:- 01299-272757** *Hands on Printing* **Email:- clickclick2@hotmail.co.uk**  
**Mobile 07708 587787**

All digital media printed to 6"x4" 5"x7" 8x6" 10"x8"  
**CANVAS WRAPS FROM 12"X16" - 30"X 20"**  
**ENLARGEMENTS FROM 12X10" TO 24X36"**  
 FROM PHOTO'S, DIGITAL MEDIA & 35mm SLIDES

**PASSPORT PHOTO'S ONLY £5-00**  
**WHILE YOU WAIT**

**MOST VIDEO FORMATS TRANSFERRED TO D.V.D.**  
 USB or SD cards

INCLUDING VHS - VHSC - SONY 8 - DIGITAL 8 - Hi8 - MINI DV & BETAMAX  
 REEL TO REEL & CASSETTE  
**AUDIO TAPES & OLD LPs TO CD**

**PHOTO & VIDEO FILES TRANSFERRED FROM MOBILES TO DVD ETC.**

**STANDARD 8 - SUPER 8 FILMS TRANSFERRED TO D.V.D.**  
 USB or SD cards  
**DAMAGED PHOTOGRAPHS RESTORED ETC.**

**BIRTHDAY AND CELEBRATION BANNERS**

Look Who's 50 Today!

**VINYL BANNERS - BUSINESS CARDS - SHORT RUN FLYERS INVITATIONS - ORDERS OF SERVICE**

**B-W OR COLOUR PHOTOCOPIES**  
**SELECTION OF PHOTO FRAMES**  
 Traditional Studio Portraits and Pet Photo's

**Video Filming Service**

43, High St.  
 Cleobury Mortimer.  
 DY14 8DQ

 **LACON CHILDE SCHOOL**   
 the future begins here  
 Headteacher: Darren Reynolds

1735



Lacon Childe School, Love Lane, Cleobury Mortimer, DY14 8PE Tel. 01299 270312 email - admin@lacon-childe.org.uk

  
**LUDLOW SALVAGE**  
 ~ Est 2017 ~  
 Reclaimed Building Materials and Architectural Antiques

Station yard, Station road,  
 Woofferton, Ludlow SY8 4AW

**T 07805 312168**  
**@ ludlowsalvage@gmail.com**  
**f /ludlowsalvage**  
**ig /ludlowsalvage**

**WWW.LUDLOWSALVAGE.CO.UK**

**BoomeranG**  
 of Cleobury Mortimer  
 private hire travel

- Friendly, reliable service
- Local & long distances
- Fully council licensed (up to 12 passengers)
- Airport transfers
- Courier service
- All occasions catered for

Tel: 01299 271257, Mob: 07411 142755, Email: stuart.boomerang@yahoo.co.uk

---

# Cleobury Mortimer Golf Club

At Cleobury Mortimer Golf Club we believe that a really enjoyable golf day takes more than just a great golf course. We make sure that your whole experience, from the friendly welcome in the golf shop to your drinks and meal in our relaxed clubhouse, is all part of a day you'll remember.



## Everyone Welcome

Membership available.

Just some of the many benefits of joining Cleobury Mortimer Golf Club

- Access to full length 27- hole golf course
- Opportunity to achieve and maintain a handicap
- Family, Friendly Environment
- Playing opportunities at all times of the week
- A range of competitive opportunities
- Open dawn to dusk 363 days a year.

*We look forward to meeting you at Shropshire's friendliest golf club.*



- 📞 01299 271 112 (ext 1)
- ✉️ [pro@cleoburygolfclub.com](mailto:pro@cleoburygolfclub.com)
- 🌐 [www.cleoburygolfclub.com](http://www.cleoburygolfclub.com)



## In Business - The Framing Studio

Paul Serrell-Cooke served in the Royal Air Force long term, his last post as officer in charge of the Defence Distribution out of the Stafford and Donnington depots. After a few month he switched focus to deliver commitments made in a successful in-house bid for the Defence Storage and Distribution Agency. He faced a serious task there, to reduce the operating costs by £441millions in ten years. He was making his mark until an opportunity to get out came along and he took it.

He worked as a management consultant at a variety of companies ranging from the Welsh education authority to British Car Auctions until he retired in 2021. The big question was what to do to occupy himself and the answer came in a moment of inspiration - picture framing. Ask him why and he can't say, it was what came into his mind, something he'd never known or considered before.

His time in the military and industry had developed a capacity to get on and act after making such a decision. He took a weekend course with All About Framing, acquired the basic skills and

bought a good starter's kit from the same company. He has a room as his studio and workplace in the family home.



*Paul relaxed at home, with framed works all around.*

He has discovered how heavy and difficult to obtain is glass of a good standard. The answer is plastic, a material forever advancing and much easier to move. "If you drop it on your toe, it won't smash," he smiles. How good is it as a material? "Perspex are making a museum grade," is the reassuring answer.

"You're learning every day," he explains. "I spent a day with an

old RAF colleague who's been doing framing for 20 years." Paul is buying some of the man's kit.

Socialising through this work brought contact with a range of people that included a chance to offer a home to refugees from the war in Ukraine. The couple are happily installed and have found work; Paul estimates there are six families now living safely in the area. Big hearted Cleobury at work again.

I have personal experience of the man's work, framing a drawing by my oldest grand daughter that she gave to me before heading south to university and more training. Paul went to a lot of trouble to match another favourite picture and even opened an account with a new supplier to get a decent match for the older work. He does go to a lot of trouble to get it right.

So he's settled in what he's doing and he has ideas of further developing the service. Contact with artists and recognising how the right shade of inner frame can show a picture to best advantage has him thinking of making this a feature of his work. Custom designed framing, in effect.

### Bespoke framing and mounting for:

- Artwork
- Photographs
- Canvases

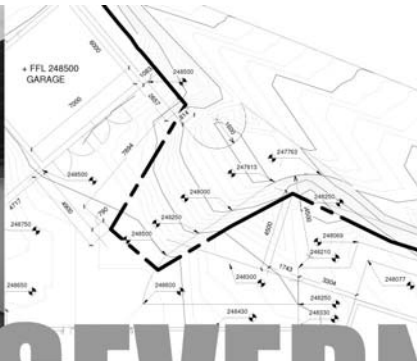


## The Framing Studio Cleobury Mortimer

Paul Serrell-Cooke  
07791 378240

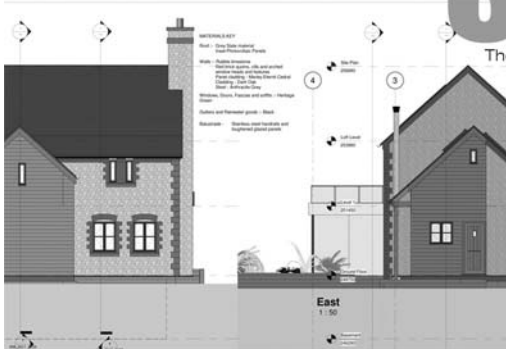
*Bringing artwork and images to life*



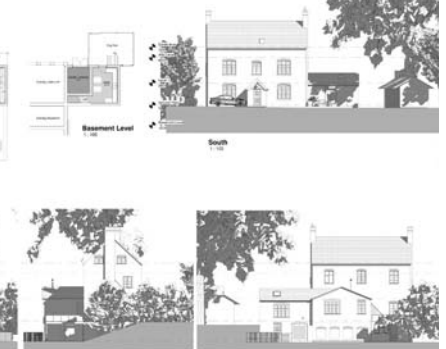
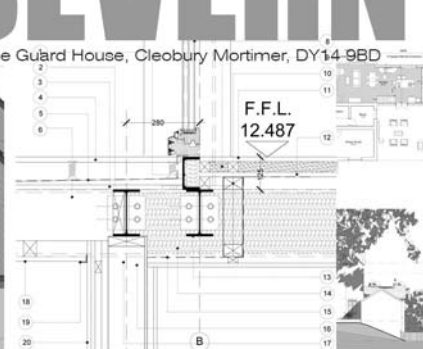


# SEVERN

architects



The Guard House, Cleobury Mortimer, DY14 9BD



We are a friendly Shropshire based architectural practice with plenty of experience in all kinds of residential projects large and small. Using the latest 3D software package and technology we can turn your virtual dream home into a reality.

Contact us now on 07825 759484 or email [julie@severnarchitects.co.uk](mailto:julie@severnarchitects.co.uk) for your consultation

Our Architectural Design Services include

- Design & Feasibility Studies
- General project Advice
- 3D Modelling
- 2D CAD Drawing
- Planning Advice and Submissions
- Building Regulation Applications
- Tender & Construction Drawings
- Contract & Project Management

RIBA 

Chartered Practice

# KIDDERMINSTER

## SELF STORAGE AND REMOVALS



### STORAGE

Free insurance . Flexible Terms  
Fixed Price Guarantee . No hidden costs

### REMOVALS

Professional Removal Service  
Est. over 25 years

### PACKAGING MATERIALS

Boxes, Bubblewrap, Tape Etc. for sale  
Free local deliveries on orders over £20

**01562 744088**

[www.kidderminsterselfstorage.co.uk](http://www.kidderminsterselfstorage.co.uk)

Unit 11 Finepoint Way, Stourport Road, Kidderminster DY11 7FB  
[info@kidderminsterselfstorage.co.uk](mailto:info@kidderminsterselfstorage.co.uk)



## CLEOBURY COMMUNITY HUB

### Coffee Shop, Climb61, Youth Events

Mondays - 9:30am - 8pm

Tuesdays - 9:30am - 9pm

Fridays - 9:30am - 5:30pm

We cannot believe how fast September has gone. We started the month afresh, ready for the new academic year and for all that brings. We restarted all of our regular activities with Rock Tots and Kids Climbing becoming over subscribed immediately! Unfortunately everything got put on hold as with, what seemed like the whole world stopped to celebrate and mourn the life of Queen Elizabeth II. It was our privilege to open up the CCH to stream the funeral and share it with 48 other people, many of whom wanted to come together as community to celebrate the Queen's life, knowing that she was now resting in God's arms. Ladies Night at Climb61 continues to grow and provide a fantastic evening for all. Book quickly for this month's session as it's on Thursday 6th, 6pm-8pm! (book at [www.smy.org.uk](http://www.smy.org.uk))

**Focus on... Alpha** - 7 sessions: Tuesday evenings 7:30pm-9pm

The Alpha Course is a conversation about faith, life and God.

It's a safe place for the curious, the unconvinced, the sceptical, the used-to-believe, the broken and you.

Over the 7 sessions there are a series of short videos that we watch together and then discuss the topics covered over coffee and cake. It's as simple as that.

Come and explore on your own or in a group at the CCH.

We'd love to join you on your journey and be a little part of your story.

*Don't forget our regular activities:*

*Mondays - Rock Tots, Kids Climbing Club, Youth Climbing Club, Coffee Shop, Soft Play, Climb61 Bouldering.*

*Tuesdays - Coffee Shop, Climb61 Bouldering, Soft Play*

*Wednesdays - Hub Youth (alternate weeks)*

*Thursdays - Hub Youth (alternate weeks), Ladies Night (6th Oct)*

*Fridays - Coffee Shop, Climb61 Bouldering, Soft Play*

**Climb61 September Session Times** - To book: [www.smy.org.uk](http://www.smy.org.uk)

**Mondays** 2pm-3pm, 6:30pm-8pm.

**Tuesdays** - 9:30am-11am, 11:15am-12:45pm, 2:15pm-3:45pm, 4pm-5:30pm, 5:45pm-7:15pm, 7:30pm-9pm

**Fridays** - 9:30am-11am, 11:15am-12:45pm, 2:15pm-3:45pm, 4pm-5:30pm



@cleoburycommunityhub



@saintmarysyoungproject @cleoburycommunityhub



# ONE STOP ROOFING

## The Flat Roof Specialists



- Rubber, Fibreglass & Felt
- Re-pointing & Chimney Repairs
- Fascias & Guttering



**Take advantage of our offer:** Replace your flat roof Making EPDM (rubber) your choice for a long lasting, weatherproof & high slip resistant membrane, with a lifespan of 50 years, **get it for the same price as felt**, which only carries a 10 year guarantee!

Replace your flat roof with EPDM (rubber) & add a skylight or lantern, giving extra light to your room starting **from as little as £400!!**

Freephone 0800 0855277 \* 07538 471274

[www.onestop-roofing.co.uk](http://www.onestop-roofing.co.uk)

[onestoproofinguk@gmail.com](mailto:onestoproofinguk@gmail.com)

Family business est. 35 years.  
All repair work undertaken

Proud members of  
**Checkatrade.com**  
Where reputation matters

## CLEOBURY SEAFOOD & FREEZER CENTRE

6 Newhouse Farm - Tenbury Road - Cleobury Mortimer

**01299 271345**

### Ready Meals

*We stock a wide range of ready meals, from the ordinary to the extra ordinary !  
Plus a range of Vegetarian, Gluten Free and Vegan meals.*

### Mr Dave's

*Meat, Chicken, Prawn and Vegetarian Balti, Madras Curry  
Mr Dave's extra large naan, plain and garlic & coriander.*

### Fish

*Cod, Haddock, Plaice fillets, Sea bass, Lemon sole, Cod Loins, Smoked Haddock.  
Battered & breaded fish fillets. Young's Jumbo Cod Fish Fingers.(Very Popular)*

### Seafood

*Raw king Prawns, Squid, , whitebait, cooked tiger prawns, scallops, seafood cocktail.  
Hot & Spicy Prawns, Breaded Cod & Plaice Goujons*

*New Fish Cakes Thai Style Cod & Prawn, Smoked Haddock, Mozzarella & Spring Onion,  
Sea Bass, Cod, Lime & Ginger.*

### Fruit and Vegetables

### Potato Products

*Bannister Jacket Potatoes, Oven chips, Sweet Potato Fries Twister Fries, Hash Browns, Spicy Wedges*

### Chicken Products

*Southern Fried Breaded Chicken Steaks, Breaded Chicken Goujons, Chicken Nuggets, Chicken Bites.*

### Gateaux for all occasions

### BENNETTS ICE CREAM

**Opening Times 9am to 4.30pm Mon to Friday. Saturday 9am to 12**

Visit our web site [www.cleoburyfreezercentre.co.uk](http://www.cleoburyfreezercentre.co.uk)

**Cleobury Clarion October 2022**

**Page 54**



"We tried artificial flies. We tried lures. We tried live bait. Nothing works ... it's like they're psychic!"



"Blood-curdling screams. Hayes, will do nothing to help us catch a fish."



**Live Life @ Home**

### Home Support Services

All staff enhanced DBS checked with over 20yrs experience and training within the local authority/social services mainstream and dementia care sector. Fully insured.

Are you in need of support with the following basic day to day tasks?

Assistance during the day or night	Completing Forms
Companionship	Pet Care
Shopping/Household tasks	Attending social events/ appointments

Contact Liz  
Tel: 01299 271623  
Mob: 07826 929222  
liz@lifelifeathome.co.uk

Other support services available on request.

**www.lifelifeathome.co.uk**

Contact Tracey  
Tel: 01299 211660  
Mob: 07957 659909  
tracey@lifelifeathome.co.uk

**BOOK YOUR MOT WITH US**



# LEWIS MOTORS KINLET

☎ 01299 841 391



**SERVICING & REPAIRS TO ALL MAKES & MODELS**

■ Clutches & Cambelts	■ Exhausts, Batteries & Tyres	■ Wheel Alignment
■ Diagnostics	■ Recovery	■ Welding

Follow us on Facebook: [LewisMotorsKinlet](https://www.facebook.com/LewisMotorsKinlet)

## KINLET C OF E PRIMARY SCHOOL

Love to Learn – Learn to Love










- Outdoor play areas
- Kind – Inspire – Nurturing – Learning – Eco-friendly -Teamwork

- Small family atmosphere

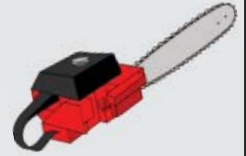
[www.kinlet.shropshire.sch.uk](http://www.kinlet.shropshire.sch.uk)

[admin@kinlet.shropshire.sch.uk](mailto:admin@kinlet.shropshire.sch.uk)

Telephone: 01299 841210



## N.R. Evans Landscaping



- Grass cutting
- Strimming
- hedge cutting
- garden and site clearance
- Fencing, including:
- Panel fencing
- Post and rail fencing
- Picket fencing
- Stock fencing

domestic and commercial customers welcome

**Call for a chat on 07535 902847**

Email: [nrevansgardenmaintenance@gmail.com](mailto:nrevansgardenmaintenance@gmail.com) Facebook: N.R.Evans Garden Maintenance

## Booton Brothers



## Construction

**Rich: 07445298747**

**Mike: 07853225401**

**[bootonbrothers@outlook.com](mailto:bootonbrothers@outlook.com)**

**All building work undertaken**

## Elite Sweeps

Professional Chimney Sweep

## & HETAS Stove Installer

- ✓ Prompt, reliable & friendly service.
- ✓ Cows and Chimney Pots fitted.
- ✓ Fully qualified and fully insured.
- ✓ Guild certificates issued after every sweep.
- ✓ HETAS Approved Installer.



Call Eddie Tel. 01299 382222 / 07895 612915

[www.elitesweeps.co.uk](http://www.elitesweeps.co.uk)



## I.P.T. GROUND SOLUTIONS

*Over 30 years experience*

For all pipe installations:

- Sewage • Storm drainage
- Blockage/Repairs • Ditches
- Grass Cutting / Hedge Trimming
- Driveways • Ground clearance

*For all your ground needs*

**Contact Ian on:**

**T: 07870 384 096**

**E: [ian.ptaylor@yahoo.com](mailto:ian.ptaylor@yahoo.com)**

**W: [iptgroundsolutions.co.uk](http://iptgroundsolutions.co.uk)**



This month is a fresh start for so many things, a new King and Queen Consort and Autumn, well and truly on the way. However, some things never change and scamming is one of them. This month, I want to focus on scamming through text or email. The art of scamming starts with the sending/receipt of a simple text message or email. An example of a simple text message could be in the form supposedly from your bank asking to call a number given as there is a problem with your account. Scammers use very convincing and persuasive language to ensure that a large enough number of people respond and they use computerised technology to send out thousands of messages in a short time. This is crime that really does pay! So how does it work?

To start with, a typical message might state that your bank has spotted an error as part of a routine audit. They will give the impression that this is very important and could result in loss if you do not act quickly. This form of persuasive language can be enough to worry someone into not thinking or acting logically and checking that it's true. After all we naturally believe our bank is a safe and trusted haven and the message must be true. That's the first mistake that we make and the scamming trap is set! A phone number is given for the victim to call and when it is answered the person at the other end will answer as if it is Nat West, Lloyds, Barclays or whatever. If you happen, by chance, to have an account with whatever Bank they say they are, then stage two of the scam starts. If they answer as Barclays, and you do not bank with them and say so, then they will just apologise and hang up. If stage two is started then the person will give you some information which is sufficient to have you believe you need to act and do what is requested. This can take the form of a suggestion that your account has been compromised by a scammer and it must be closed and a new account opened. If you agree this far you would be asked for current details of your account and may even be asked to verify the details of a bank debit or credit card including the

security number on the credit or debit card. The scammer now has sufficient info to use your bank account or your credit card to steal your money. Of course, won't know until you next check your statements. The scammer will close off by saying for example, that they will transfer you to another extension to open a new account to which your money will be 'safely transferred'. This new person will take every single piece of personal info needed to enable them to fully access your existing bank account while convincing you that the new account is being set up. They may be very polite, helpful and share your concerns about 'how awful scamming is and finish by saying, everything is secure now and please check back with your bank in a few days if you have any concerns. Within minutes, your bank account will have been cleaned out or seriously depleted and you have been robbed. They leave no trace behind and money they transfer goes through several accounts to make sure it is well hidden from the authorities so a prosecution rate if they are found is very low. What can you do? First of all, right at the beginning if you get an unexpected call or message purporting to be from your bank (or any other recognisable institution), STOP and THINK! Were you expecting it? If not then do not respond but check with the Bank using a number they have given you that you know is genuine and report it to them. Unlike a scammer, you will not be pressured into giving out any information other than the normal information for the Bank's security checks. The banking industry is becoming more responsive to issues with scammers and in many cases, it is possible to get your money back, but it is not guaranteed. Safer to ensure you are not tricked in the first place. The importance of stopping to think when someone calls or emails out of the blue cannot be stressed enough. A genuine friend or relative or company representative will not object to you challenging them. The message is as true today as it has been. STOP, THINK, CHECK before proceeding. It's YOUR MONEY, not theirs.



# EVERYTHING INTERIOR UPHOLSTERY

## REUPHOLSTERY SERVICES:

- AUTOMOTIVE
- CARAVANS
- CAMPER VANS
- TRADITIONAL & MODERN
- COMMERCIAL & BESPOKE
- DOMESTIC
- CARPET & UPHOLSTERY CLEANING  
*(in partnership with WE GLEAM)*

OVER 30 YEARS EXPERIENCE



## CONTACT US TODAY

Unit 19 Old Station Business Park, Cleobury Mortimer, DY14 8SY  
07961 712683 / 07961 792103  
[www.everythinginterior.co.uk](http://www.everythinginterior.co.uk)  
email: [everythinginterior@outlook.com](mailto:everythinginterior@outlook.com)

**BOWLING CLUB'S BIG SUCCESS**



Cleobury's bowling club has been highly praised by a sports surface consultant after his inspection of greens throughout the county. In his report he comments on maintenance and the need to keep on top of the job. And he ends by nominating the Top Three with Cleobury the overall best. Congratulations are due to green keeper Phil Pack and his team of Andy Pain, Roy Broome and Jean and Tony Wilson.

**ARE YOU LOOKING FOR  
Independent Financial Advice?**

Consequential Planning are your local independent financial advisers. We have a highly qualified team with extensive experience in all aspects of financial planning. We can offer help and advice on investments, pensions, protection and mortgages.

Telephone 01299 407128  
to arrange a free financial review or visit:  
[www.cnsq.co.uk](http://www.cnsq.co.uk)







# Burning Blocks

www.burningblocks.co.uk



A safe and easy to use alternative for logs for both wood stoves and open fires

Discount for local delivery quote: "family10" at the checkout

- Easy to light / roaring fire in under 5 mins
- Easy to stack / 10kg packs
- High heat / similar to coal on output
- Each briquette lasts over an hour
- Low moisture / 8% moisture maximum
- Store undercover

UK wide delivery available, approx. 2 days

buy online at [www.burningblocks.co.uk](http://www.burningblocks.co.uk)

For more information:-

Email: [burningblocks@gmail.com](mailto:burningblocks@gmail.com) Website: [www.burningblocks.co.uk](http://www.burningblocks.co.uk) FB: <https://www.facebook.com/burningblocksbriquettes>



# Richard Haines

## The Worcestershire Chimney Sweep

- ◆ Traditional & Power Sweeping Services
- ◆ Certified Chimney Sweep
- ◆ Insurance Recognised certificate issued



M: 07752 116629 T: 01584 781358 E: [lostcity5@hotmail.co.uk](mailto:lostcity5@hotmail.co.uk)

[www.theworcestershirechimneysweep.co.uk](http://www.theworcestershirechimneysweep.co.uk)




# LUDLOW FIREWOOD

~ Est 2019 ~

Suppliers of Premium Grade Ready to Burn Firewood, Beautifully Crated and Delivered to Your Door



**T** 07949 318014

**@** [ludlowfirewood@gmail.com](mailto:ludlowfirewood@gmail.com)

**IG** /ludlowfirewood

**F** /ludlowfirewood

Station yard, Station road, Woofferton, Ludlow SY8 4AW

**WWW.LUDLOWFIREWOOD.COM**

Available in Barrow bags and nets for all your access requirements.

---

**CLEOBURY IN BLOOM**

We would like to thank those who participated in our Bank Holiday in Bloom competition and were pleased to see a variety of nominations – all shown below. Prizes will be given to all entries. We plan to run similar events next year.







# EnergyZone

Integrated Renewable Solutions

## SHROPSHIRE HEAT PUMPS

EnergyZone are one of Cleobury's best kept secrets. We are one of the largest and longest established renewable engineering companies in the UK installing heat pumps since 2003. 14 in house engineers with over 130 years combined experience completing over 1000 Domestic and Commercial systems all over the UK. Based next to Hobsons Brewery in Cleobury Mortimer we are your local experts in heat pump systems.

Heat pumps are rapidly becoming the standard heating system for all new build properties, as they always have been in many parts of Europe, and the Government is offering a very generous incentive to encourage anybody with an Oil, LPG or Electric boiler to replace this with a heat pump.

**Replacing your boiler with a heat pump has many advantages;**

- Lower running costs for your heating - up to 50% lower
- No dependence on fuel deliveries
- Removal of current boiler under our scrappage scheme
- Up to a 10-year warranty with a 20 to 25-year life expectancy
- Government backed Renewable Heat Incentive (RHI) to help cover installation cost over 7-years (available until March 2022)

**What can EnergyZone offer?**

Complete design and installation of a heat pump system, including all paperwork required to enable you to claim the maximum Government incentive

Upgrade of your old radiators and hot water cylinder if required

Local support with annual servicing through our EZcare package

With the current Government incentive now is a great time to consider scrapping your old fossil fuel boiler and installing a heat pump that is not only good for the planet but also your pocket.

**Call us for a free home assessment from one of our engineers.**



Fully accredited installers of the brands above ensuring the correct model is selected for your home

# 01299 270011

[www.energyzone.co.uk](http://www.energyzone.co.uk) [sales@energyzone.co.uk](mailto:sales@energyzone.co.uk)





# Community Contacts for Clarion Readers

CEMETERY ADMINISTRATOR	Theresa Ray	07703 965 064	theresa.25016@hotmail.co.uk
CLEOBURY COUNTRY CENTRE		01299 272300	In Love Lane, 9 to 5 Mon to Fri.
CLEOBURY DENTAL PRACTICE		01299 271747	<a href="http://www.cleoburydental.co.uk">www.cleoburydental.co.uk</a>
CLEOBURY CARERS	Michelle	01743 341995	<a href="mailto:carerssupport@shropshire.gov.uk">carerssupport@shropshire.gov.uk</a>
CLEOBURY COMPASSIONATE COMMUNITIES	Katja Jones	07966 080111	Tuesday and Thursday at the Medical Centre
CLEOBURY MORTIMER LIBRARY		01299 272301	Open 9 to 7 Mon, 9 to 5 Tues/Fri and 10 to 1 Sat.
LOCAL POLICE	PC Wayne Strangwood	07773 054 587	<a href="mailto:wayne.strangwood@westmercia.pnn.police.uk">wayne.strangwood@westmercia.pnn.police.uk</a>
CLEOBURY MORTIMER GUIDES	Fiona McCallum	07805 737 555	
CLEOBURY MORTIMER SCOUTS	Lowri Hughes		<a href="mailto:cleoburybeavers@gmail.com">cleoburybeavers@gmail.com</a>
CRIMESTOPPERS		0800 555 111	Free Police contact. Talk in confidence, to report any crime.
DOMESTIC VIOLENCE HELPLINE		0800 783 1359	Women's Aid, 24 Hour support:
HOME FROM HOSPITAL		01584 878046	Help over the first weeks back home from Age UK
MARKET HALL	Kim	01299 272732	<a href="mailto:markethall@cleobury.org.uk">markethall@cleobury.org.uk</a>
MEDICAL CENTRE		01299 270209	Out of surgery hours, use the Shrop Doc Service.
SHROP DOC		111	Service available evenings and weekends
THE MEN'S SHED	Pete Blackburn	07776 243 584	<a href="mailto:petblack@me.com">petblack@me.com</a>
THE PHARMACY		01299 270219	Closes for half day on Saturday. Delivers prescriptions
ST ELIZABETH'S CATHOLIC CHURCH	Angela Flowers	01299 270318	Sunday Mass at 9.00am
NIGHTINGALE NURSING FUND	Rosemary Abbiss	01746 718451	
TOWN COUNCIL	Clerk Matthew Sheehan	01299 271154	Cleobury Country Centre 9 to 2 pm, Mon to Fri. <a href="http://www.cleobury.org.uk">www.cleobury.org.uk</a> . Council meets in the Centre on the first Monday of the month
POST OFFICE		01299 270211	In the Select and Save Grocery Store, Church Street
SAINT MARY'S YOUTH PROJECT	Mark Greaves	07828 116810	<a href="mailto:mark.stmarys@live.co.uk">mark.stmarys@live.co.uk</a>
SHROPSHIRE COUNCIL		0345 678 9000	
SOUTH SHROPSHIRE YOUTH FORUM		01584 874922	
VOLUNTARY CAR SCHEME		01299 666119	Mandy Smith
WASTE DISPOSAL		0345 678 9007	The contractor is Veolia
WATER SUPPLY EMERGENCIES	Severn Trent	0800 783 4444	
NEWLIFE CHURCH	Pastor E Stirrup	01562 630595	Sunday services at 10.30

**Collect the Clarion in Cleobury from:** Select and Save Grocery, Londis Store, Cleoburrs, Cleobury Cafe, The Severn Hospice Shop, Mid Counties Co-op, Purslows, and The Library.

**Out in Cleobury Country at:** Heath Farm Meats, **Bagginswood**; **Clee Hill Stores**; **Clows Top Stores**; The Sun and Slipper, **Mamble**; **Hopton Bank Service Station**; ; **Ludlow Library**; **Mahorall Cider Farm**; The Colliers Cafe & Shop, **Rock**; The Fighting Cocks, **Stottesdon**; The Duck Inn, **Chorley**; The Live and Let Live, **Neen Sollars**; The Eagle and Serpent, **Kinlet**; Parker Motors, **Ditton Priors**.

**Copies are also available from the Parish Churches in:** Cleobury Mortimer, Bayton, Doddington, Hopton Wafers, Milson, Neen Savage and Neen Sollars.

**Missed your Clarion? Cleobury Mortimer Library keeps the current month's copy on file and all back issues are available to read as pdfs from [www.cleoburyclarion.co.uk](http://www.cleoburyclarion.co.uk).**

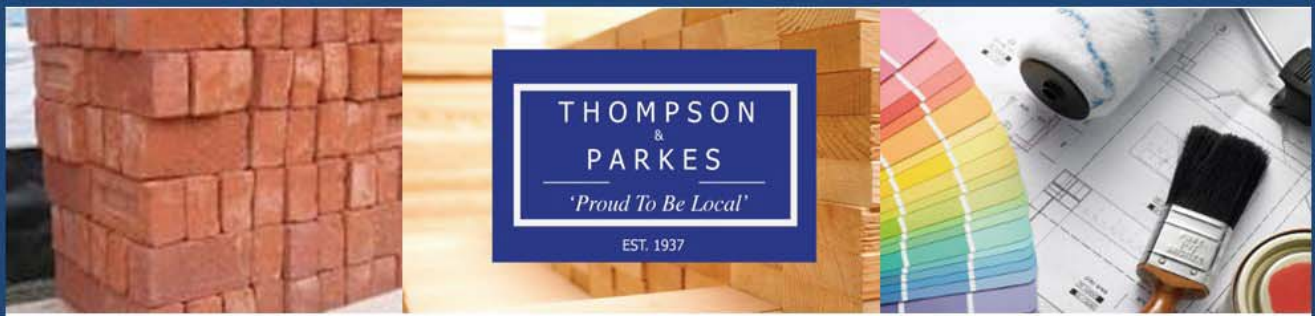
**DEADLINE FOR THE NOVEMBER ISSUE: OCTOBER 22nd. CONTRIBUTORS PLEASE NOTE THAT THIS IS THE LAST POSSIBLE DATE TO RECEIVE REPORTS.**

**Editor and Advertising Sales:** Jim Reynolds, 4 Childe Road, Cleobury Mortimer, Shropshire DY14 8PA. Telephone: 01299 270642 Mobile: 07410 977 212

E-Mail: [editor@cleoburyclarion.co.uk](mailto:editor@cleoburyclarion.co.uk) or [uncle.jim@icloud.com](mailto:uncle.jim@icloud.com)

The Clarion On The Web: [www.cleoburyclarion.co.uk](http://www.cleoburyclarion.co.uk)

Printed by Badger Print and Design of Shifnal, 01952 730511



Your local specialist supplier of  
Insulation, Timber, Plywood and all Building Materials

# THOMPSON & PARKES

## SANDSTONE - Best offer locally!

A natural product, Stoneplus Raj Indian sandstone has subtle tones and ideal for traditional patios.

15.25m<sup>2</sup> patio packs including 900 x 600, 600 x 600, 600 x 300 and 300 x 300 slabs

Just £24.50/m<sup>2</sup> - £373.63 +VAT per pack

**While stocks last and available at all outlets!**



## Proud to be Local

[www.thompsonandparkes.co.uk](http://www.thompsonandparkes.co.uk)

Stocking and Delivering all Your Building and DIY Materials

Kidderminster 01562 745881  
Oldington Trading Estate DY11 7QP

Oreton 01746 718414  
Cleobury Mortimer DY14 0TH

Stourport 01299 534545  
Minster Road DY13 8AB